



SMCA5 rabbit pAb

Catalog No	BYab-08773
Isotype	IgG
Reactivity	Human; Mouse
Applications	WB
Gene Name	SMARCA5 SNF2H WCRF135
Protein Name	SMCA5
Immunogen	Synthesized peptide derived from human SMCA5 AA range: 851-901
Specificity	This antibody detects endogenous levels of SMCA5 at Human/Mouse
Formulation	Liquid in PBS containing 50% glycerol, 0.5% BSA and 0.02% sodium azide.
Source	Polyclonal, Rabbit,IgG
Purification	The antibody was affinity-purified from rabbit serum by affinity-chromatography using specific immunogen.
Dilution	WB 1: 500-2000
Concentration	1 mg/ml
Purity	≥90%
Storage Stability	-20°C/1 year
Synonyms	
Observed Band	
Cell Pathway	Nucleus . Chromosome . Localizes to mitotic chromosomes (PubMed:12972596). Co-localizes with RSF1 in the nucleus (PubMed:12972596). Co-localizes with PCNA at replication foci during S phase (PubMed:15543136). Co-localizes with BAZ1B/WSTF at replication foci during late-S phase (PubMed:15543136). Recruited to DNA damage sites following interaction with SIRT6 (PubMed:23911928). .
Tissue Specificity	Ubiquitously expressed.
Function	developmental stage:Overexpressed in CD34-positive erythrocyte progenitor cells in acute myeloid leukemia. Down-regulation correlates with hematologic remission following chemotherapy.,function:Helicase that possesses intrinsic ATP-dependent nucleosome-remodeling activity. Complexes containing SMARCA5 are capable of forming ordered nucleosome arrays on chromatin; this may require intact histone H4 tails. Also required for replication of pericentric heterochromatin in S-phase specifically in conjunction with BAZ1A. Probably plays a role in repression of poll dependent transcription of the rDNA locus,

Nanjing BYabscience technology Co.,Ltd



through the recruitment of the SIN3/HDAC1 corepressor complex to the rDNA promoter. Essential component of the WICH complex, a chromatin remodeling complex that mobilizes nucleosomes and reconfigures irregular chromatin to a regular nucleosomal array structure. The WICH complex regulates the

Background

The protein encoded by this gene is a member of the SWI/SNF family of proteins. Members of this family have helicase and ATPase activities and are thought to regulate transcription of certain genes by altering the chromatin structure around those genes. The protein encoded by this gene is a component of the chromatin remodeling and spacing factor RSF, a facilitator of the transcription of class II genes by RNA polymerase II. The encoded protein is similar in sequence to the Drosophila ISWI chromatin remodeling protein. [provided by RefSeq, Jul 2008],

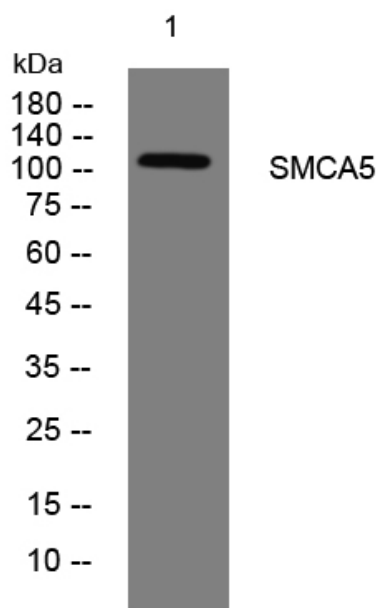
matters needing attention

Avoid repeated freezing and thawing!

Usage suggestions

This product can be used in immunological reaction related experiments. For more information, please consult technical personnel.

Products Images



Western blot analysis of lysates from U2OS cells, primary antibody was diluted at 1:1000, 4° over night