



PSPHL rabbit pAb

Catalog No	BYab-08780
Isotype	IgG
Reactivity	Human;Rat;Mouse;
Applications	IHC;IF
Gene Name	PSPHP1 CO9 PSPHL
Protein Name	PSPHL
Immunogen	Synthesized peptide derived from human PSPHL AA range: 21-71
Specificity	This antibody detects endogenous levels of PSPHL at Human
Formulation	Liquid in PBS containing 50% glycerol, 0.5% BSA and 0.02% sodium azide.
Source	Polyclonal, Rabbit,IgG
Purification	The antibody was affinity-purified from rabbit serum by affinity-chromatography using specific immunogen.
Dilution	IHC-p 1: 50-200. IF 1:50-200
Concentration	1 mg/ml
Purity	≥90%
Storage Stability	-20°C/1 year
Synonyms	
Observed Band	
Cell Pathway	
Tissue Specificity	Highly expressed in FA (Fanconi's anemia) B-cells of complementation group A and Raji cells. Not expressed in B-cells of other FA complementation groups.
Function	catalytic activity:O-phospho-L(or D)-serine + H(2)O = L(or D)-serine + phosphate.,cofactor:Magnesium.,disease:Defects in PSPH are the cause of 3-phosphoserine phosphatase deficiency (PSPHD)[MIM:172480]. Affected individuals have pre- and postnatal growth retardation, moderate psychomotor retardation and facial features suggestive of Williams syndrome.,function:Catalyzes the last step in the biosynthesis of serine from carbohydrates. The reaction mechanism proceeds via the formation of a phosphoryl-enzyme intermediates.,pathway:Amino-acid biosynthesis; L-serine biosynthesis; L-serine from 3-phospho-D-glyceric acid: step 3/3.,similarity:Belongs to the serB family.,subunit:Homodimer.,

Nanjing BYabscience technology Co.,Ltd

网址: www.njbybio.com

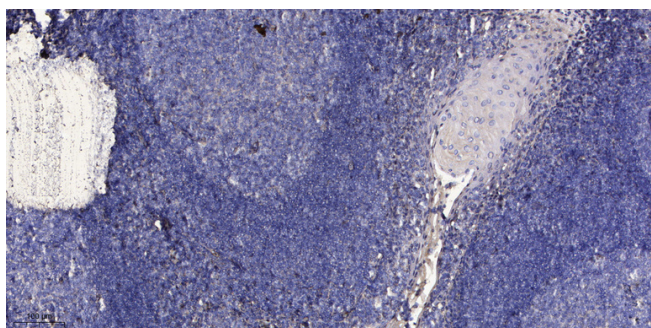
官方热线: 025-5229-8998

监督电话: 15950492658



Background	This gene is significantly upregulated in Fanconi's anemia fibroblasts but downregulated or absent in fibroblasts from normal donors. It is also highly expressed in FA B-cells of complementation group A. [provided by RefSeq, Jul 2008],
matters needing attention	Avoid repeated freezing and thawing!
Usage suggestions	This product can be used in immunological reaction related experiments. For more information, please consult technical personnel.

Products Images



Immunohistochemical analysis of paraffin-embedded human tonsil. 1, Antibody was diluted at 1:200(4° overnight). 2, Tris-EDTA,pH9.0 was used for antigen retrieval. 3,Secondary antibody was diluted at 1:200(room temperature, 30min).