



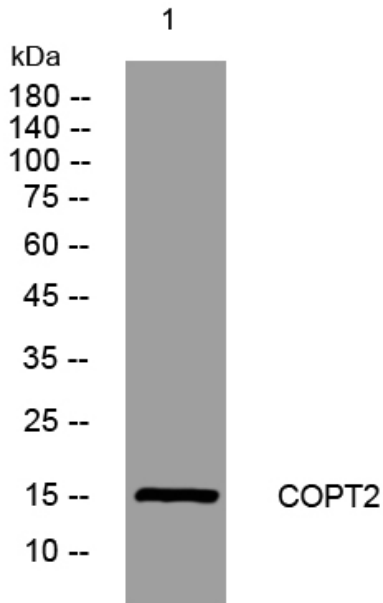
# COPT2 rabbit pAb

Catalog No	BYab-08790
Isotype	IgG
Reactivity	Human; Mouse
Applications	WB
Gene Name	SLC31A2 COPT2 CTR2
Protein Name	COPT2
Immunogen	Synthesized peptide derived from human COPT2 AA range: 10-60
Specificity	This antibody detects endogenous levels of COPT2 at Human/Mouse
Formulation	Liquid in PBS containing 50% glycerol, 0.5% BSA and 0.02% sodium azide.
Source	Polyclonal, Rabbit,IgG
Purification	The antibody was affinity-purified from rabbit serum by affinity-chromatography using specific immunogen.
Dilution	WB 1: 500-2000
Concentration	1 mg/ml
Purity	≥90%
Storage Stability	-20°C/1 year
Synonyms	
Observed Band	
Cell Pathway	Membrane ; Multi-pass membrane protein .
Tissue Specificity	Ubiquitous.
Function	function:Involved in low-affinity copper uptake .,similarity:Belongs to the SLC31A transporter family.,tissue specificity:Ubiquitous.,
Background	
matters needing attention	Avoid repeated freezing and thawing!
Usage suggestions	This product can be used in immunological reaction related experiments. For more information, please consult technical personnel.

Nanjing BYabscience technology Co.,Ltd



## Products Images



Western blot analysis of lysates from MDA-MB cells,  
primary antibody was diluted at 1:1000, 4° over night