



SGPP1 rabbit pAb

Catalog No	BYab-08859
Isotype	IgG
Reactivity	Human; Mouse; Rat
Applications	WB
Gene Name	SGPP1
Protein Name	SGPP1
Immunogen	Synthesized peptide derived from human SGPP1 AA range: 47-97
Specificity	This antibody detects endogenous levels of SGPP1 at Human/Mouse/Rat
Formulation	Liquid in PBS containing 50% glycerol, 0.5% BSA and 0.02% sodium azide.
Source	Polyclonal, Rabbit, IgG
Purification	The antibody was affinity-purified from rabbit serum by affinity-chromatography using specific immunogen.
Dilution	WB 1: 500-2000
Concentration	1 mg/ml
Purity	≥90%
Storage Stability	-20°C/1 year
Synonyms	
Observed Band	
Cell Pathway	Endoplasmic reticulum membrane ; Multi-pass membrane protein . Cell membrane ; Multi-pass membrane protein .
Tissue Specificity	Ubiquitous, with the strongest level in placenta and kidney.
Function	function:Has enzymatic activity against both sphingosine 1 phosphate (S1P) and dihydro-S1P. Regulates intracellular and extracellular S1P levels.,similarity:Belongs to the type 2 lipid phosphate phosphatase family.,tissue specificity:Ubiquitous, with the strongest level in placenta and kidney.,
Background	Sphingosine-1-phosphate (S1P) is a bioactive sphingolipid metabolite that regulates diverse biologic processes. SGPP1 catalyzes the degradation of S1P via salvage and recycling of sphingosine into long-chain ceramides (Mandala et al., 2000 [PubMed 10859351]; Le Stunff et al., 2007 [PubMed 17895250]).[supplied by OMIM, Jun 2009],

Nanjing BYabscience technology Co.,Ltd

网址: www.njbybio.com

官方热线: 025-5229-8998

监督电话: 15950492658



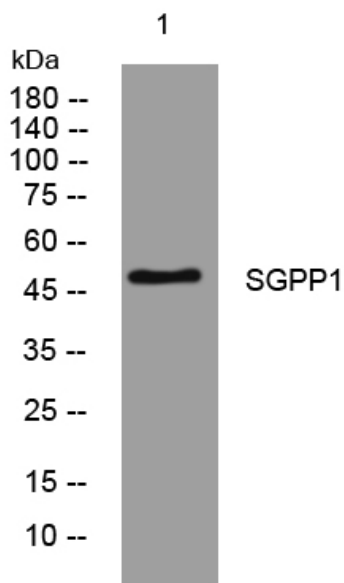
matters needing attention

Avoid repeated freezing and thawing!

Usage suggestions

This product can be used in immunological reaction related experiments. For more information, please consult technical personnel.

Products Images



Western blot analysis of lysates from KB cells, primary antibody was diluted at 1:1000, 4° over night