



YN4021

## CLVS2 rabbit pAb

Catalog No	BYab-08861
Isotype	IgG
Reactivity	Human; Mouse;Rat
Applications	WB
Gene Name	CLVS2 C6orf212 C6orf213 RLBP1L2
Protein Name	CLVS2
Immunogen	Synthesized peptide derived from human CLVS2 AA range: 26-76
Specificity	This antibody detects endogenous levels of CLVS2 at Human/Mouse/Rat
Formulation	Liquid in PBS containing 50% glycerol, 0.5% BSA and 0.02% sodium azide.
Source	Polyclonal, Rabbit,IgG
Purification	The antibody was affinity-purified from rabbit serum by affinity-chromatography using specific immunogen.
Dilution	WB 1: 500-2000
Concentration	1 mg/ml
Purity	≥90%
Storage Stability	-20°C/1 year
Synonyms	
Observed Band	
Cell Pathway	Golgi apparatus, trans-Golgi network membrane ; Peripheral membrane protein . Cytoplasmic vesicle, clathrin-coated vesicle . Early endosome membrane ; Peripheral membrane protein .
Tissue Specificity	
Function	
Background	This gene encodes a protein that belongs to the SEC14/CRAL-TRIO family of proteins. A similar protein in rat is thought to function in the endosomal pathway between early endosomes and mature lysosomes. [provided by RefSeq, Aug 2013],

Nanjing BYabscience technology Co.,Ltd



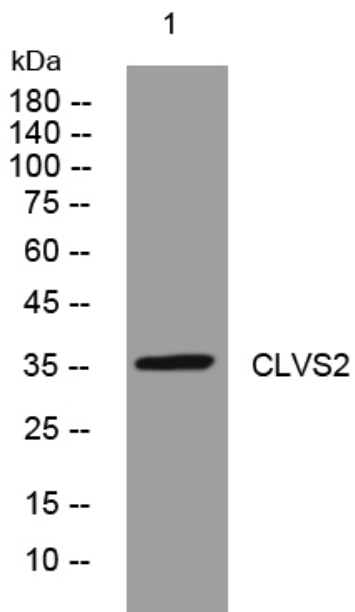
**matters needing attention**

Avoid repeated freezing and thawing!

**Usage suggestions**

This product can be used in immunological reaction related experiments. For more information, please consult technical personnel.

**Products Images**



Western blot analysis of lysates from AD293 cells, primary antibody was diluted at 1:1000, 4° over night