



# SETBP rabbit pAb

Catalog No	BYab-08872
Isotype	IgG
Reactivity	Human; Mouse
Applications	WB
Gene Name	SETBP1 KIAA0437
Protein Name	SETBP
Immunogen	Synthesized peptide derived from human SETBP AA range: 990-1040
Specificity	This antibody detects endogenous levels of SETBP at Human/Mouse
Formulation	Liquid in PBS containing 50% glycerol, 0.5% BSA and 0.02% sodium azide.
Source	Polyclonal, Rabbit,IgG
Purification	The antibody was affinity-purified from rabbit serum by affinity-chromatography using specific immunogen.
Dilution	WB 1: 500-2000
Concentration	1 mg/ml
Purity	≥90%
Storage Stability	-20°C/1 year
Synonyms	
Observed Band	
Cell Pathway	Nucleus .
Tissue Specificity	Expressed in numerous tissues. Expressed at low levels in myeloid and monocytic cells as well as in CD34+ cells; expression levels are higher in myeloid malignancies.
Function	similarity:Contains 3 A.T hook DNA-binding domains.,subunit:Interacts with SET.,tissue specificity:Expressed in numerous tissues.,
Background	This gene encodes a protein which contains a several motifs including a ski homology region and a SET-binding region in addition to three nuclear localization signals. The encoded protein has been shown to bind the SET nuclear oncogene which is involved in DNA replication. Mutations in this gene are associated with Schinzel-Giedion midface retraction syndrome. Multiple transcript variants encoding different isoforms have been found for this gene. [provided by RefSeq, Aug 2011],

Nanjing BYabscience technology Co.,Ltd



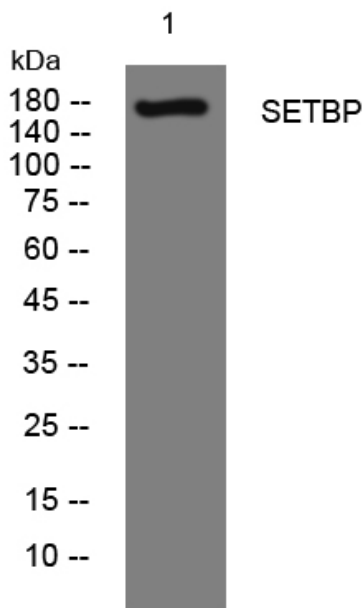
**matters needing attention**

Avoid repeated freezing and thawing!

**Usage suggestions**

This product can be used in immunological reaction related experiments. For more information, please consult technical personnel.

## Products Images



Western blot analysis of lysates from 293T cells, primary antibody was diluted at 1:1000, 4° over night