



CCDC6 rabbit pAb

Catalog No	BYab-08885
Isotype	IgG
Reactivity	Human; Mouse
Applications	WB
Gene Name	CCDC6 D10S170 TST1
Protein Name	CCDC6
Immunogen	Synthesized peptide derived from human CCDC6 AA range: 104-154
Specificity	This antibody detects endogenous levels of CCDC6 at Human/Mouse
Formulation	Liquid in PBS containing 50% glycerol, 0.5% BSA and 0.02% sodium azide.
Source	Polyclonal, Rabbit,IgG
Purification	The antibody was affinity-purified from rabbit serum by affinity-chromatography using specific immunogen.
Dilution	WB 1: 500-2000
Concentration	1 mg/ml
Purity	≥90%
Storage Stability	-20°C/1 year
Synonyms	
Observed Band	
Cell Pathway	Cytoplasm. Cytoplasm, cytoskeleton . May be a cytoskeletal protein.
Tissue Specificity	Ubiquitously expressed.
Function	disease:A chromosomal aberration involving CCDC6 is a cause of thyroid papillary carcinoma (PACT) [MIM:188550]. Inversion inv(10)(q11.2;q21) generates the RET/CCDC6 (PTC1) oncogene.,domain:The protein has mostly an alpha helical conformation similar to myosin heavy-chain tail that might adopt a coiled-coil conformation.,subcellular location:May be a cytoskeletal protein.,tissue specificity:Ubiquitously expressed.,
Background	This gene encodes a coiled-coil domain-containing protein. The encoded protein is ubiquitously expressed and may function as a tumor suppressor. A chromosomal rearrangement resulting in the expression of a fusion gene containing a portion of this gene and the intracellular kinase-encoding domain of the ret proto-oncogene is the cause of thyroid papillary carcinoma.[provided by

Nanjing BYabs science technology Co.,Ltd



RefSeq, Sep 2010],

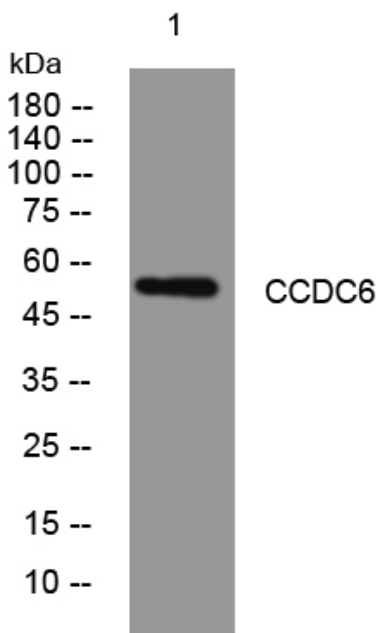
matters needing attention

Avoid repeated freezing and thawing!

Usage suggestions

This product can be used in immunological reaction related experiments. For more information, please consult technical personnel.

Products Images



Western blot analysis of lysates from HeLa cells,
primary antibody was diluted at 1:1000, 4° over night

Nanjing BYabs science technology Co.,Ltd

网址: www.njbybio.com

官方热线: 025-5229-8998

监督电话: 15950492658