



TSSP rabbit pAb

Catalog No	BYab-08929
Isotype	IgG
Reactivity	Human; Mouse
Applications	WB
Gene Name	PRSS16 TSSP
Protein Name	TSSP
Immunogen	Synthesized peptide derived from human TSSP AA range: 50-100
Specificity	This antibody detects endogenous levels of TSSP at Human/Mouse
Formulation	Liquid in PBS containing 50% glycerol, 0.5% BSA and 0.02% sodium azide.
Source	Polyclonal, Rabbit,IgG
Purification	The antibody was affinity-purified from rabbit serum by affinity-chromatography using specific immunogen.
Dilution	WB 1: 500-2000
Concentration	1 mg/ml
Purity	≥90%
Storage Stability	-20°C/1 year
Synonyms	
Observed Band	
Cell Pathway	Cytoplasmic vesicle. Vesicular, either lysosomal or endosomal.
Tissue Specificity	Expressed predominantly in cortical thymic epithelial cells.
Function	developmental stage:Expressed in fetal thymus.,function:Protease that may play a role in T-cell development.,similarity:Belongs to the peptidase S28 family.,subcellular location:Vesicular, either lysosomal or endosomal.,tissue specificity:Expressed predominantly in cortical thymic epithelial cells.,
Background	This gene encodes a serine protease expressed exclusively in the thymus. It is thought to play a role in the alternative antigen presenting pathway used by cortical thymic epithelial cells during the positive selection of T cells. The gene is found in the large histone gene cluster on chromosome 6, near the major histocompatibility complex (MHC) class I region. A second transcript variant has been described, but its full length nature has not been determined. [provided by RefSeq, Jul 2008],

Nanjing BYabscience technology Co.,Ltd



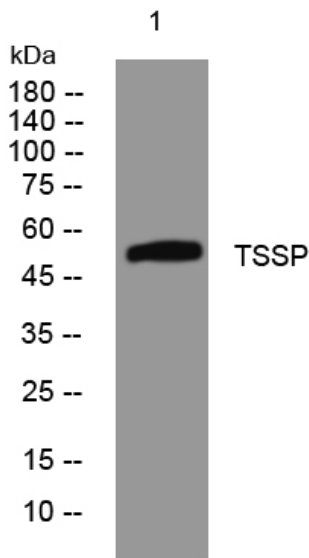
matters needing attention

Avoid repeated freezing and thawing!

Usage suggestions

This product can be used in immunological reaction related experiments. For more information, please consult technical personnel.

Products Images



Western blot analysis of lysates from HpeG2 cells, primary antibody was diluted at 1:1000, 4° over night