



TMX1 rabbit pAb

Catalog No	BYab-08944
Isotype	IgG
Reactivity	Human; Mouse
Applications	WB
Gene Name	TMX1 TMX TXNDC TXNDC1 PSEC0085 UNQ235/PRO268
Protein Name	TMX1
Immunogen	Synthesized peptide derived from human TMX1 AA range: 223-273
Specificity	This antibody detects endogenous levels of TMX1 at Human/Mouse
Formulation	Liquid in PBS containing 50% glycerol, 0.5% BSA and 0.02% sodium azide.
Source	Polyclonal, Rabbit,IgG
Purification	The antibody was affinity-purified from rabbit serum by affinity-chromatography using specific immunogen.
Dilution	WB 1: 500-2000
Concentration	1 mg/ml
Purity	≥90%
Storage Stability	-20°C/1 year
Synonyms	
Observed Band	
Cell Pathway	Membrane ; Single-pass type I membrane protein . Endoplasmic reticulum membrane ; Single-pass type I membrane protein . Predominantly found in the endoplasmic reticulum. .
Tissue Specificity	Ubiquitous. Highly expressed in kidney, liver, placenta and lung.
Function	function:May participate in various redox reactions through the reversible oxidation of its active center dithiol to a disulfide and catalyze dithiol-disulfide exchange reactions.,similarity:Contains 1 thioredoxin domain.,subcellular location:Predominantly found in the endoplasmic reticulum.,tissue specificity:Ubiquitous. Highly expressed in kidney, liver, placenta and lung.,
Background	TXNDC1 is a thioredoxin (TXN; see MIM 187700)-related protein with disulfide reductase activity (Matsuo et al., 2001 [PubMed 11152479]).[supplied by OMIM, Mar 2008],

Nanjing BYabscience technology Co.,Ltd

网址: www.njbybio.com

官方热线: 025-5229-8998

监督电话: 15950492658



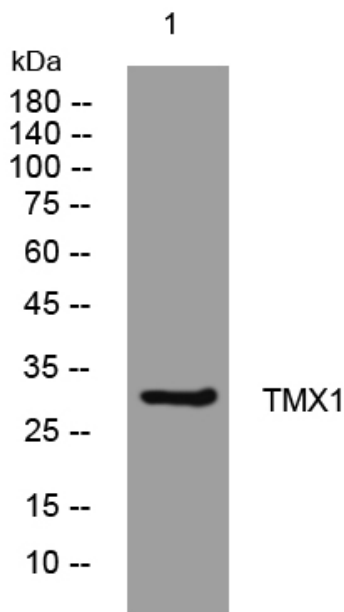
matters needing attention

Avoid repeated freezing and thawing!

Usage suggestions

This product can be used in immunological reaction related experiments. For more information, please consult technical personnel.

Products Images



Western blot analysis of lysates from HpeG2 cells, primary antibody was diluted at 1:1000, 4° over night