



# K1737 rabbit pAb

Catalog No	BYab-08947
Isotype	IgG
Reactivity	Human; Mouse
Applications	WB
Gene Name	KIAA1737
Protein Name	K1737
Immunogen	Synthesized peptide derived from human K1737 AA range: 141-191
Specificity	This antibody detects endogenous levels of K1737 at Human/Mouse
Formulation	Liquid in PBS containing 50% glycerol, 0.5% BSA and 0.02% sodium azide.
Source	Polyclonal, Rabbit,IgG
Purification	The antibody was affinity-purified from rabbit serum by affinity-chromatography using specific immunogen.
Dilution	WB 1: 500-2000
Concentration	1 mg/ml
Purity	≥90%
Storage Stability	-20°C/1 year
Synonyms	
Observed Band	
Cell Pathway	Nucleus . Cytoplasm, cytosol . Predominantly localizes to the nucleus, where it co-localizes with CLOCK. At the G1/S boundary, partially translocated to the cytosol. .
Tissue Specificity	
Function	
Background	
matters needing attention	Avoid repeated freezing and thawing!

Nanjing BYabscience technology Co.,Ltd

网址: [www.njbybio.com](http://www.njbybio.com)

官方热线: 025-5229-8998

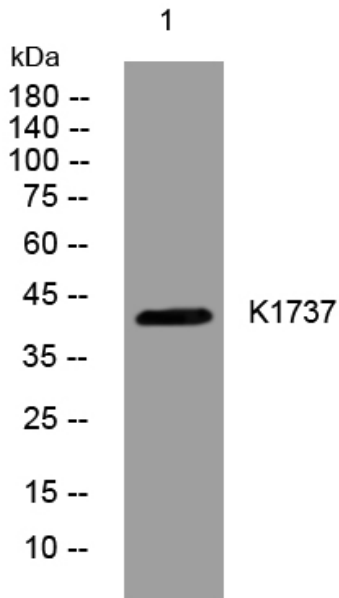
监督电话: 15950492658



### Usage suggestions

This product can be used in immunological reaction related experiments. For more information, please consult technical personnel.

### Products Images



Western blot analysis of lysates from SH-SY5Y cells, primary antibody was diluted at 1:1000, 4° over night