



# SCLY rabbit pAb

<b>Catalog No</b>	BYab-09005
<b>Isotype</b>	IgG
<b>Reactivity</b>	Human; Mouse;Rat
<b>Applications</b>	WB
<b>Gene Name</b>	SCLY SCL
<b>Protein Name</b>	SCLY
<b>Immunogen</b>	Synthesized peptide derived from human SCLY AA range: 367-417
<b>Specificity</b>	This antibody detects endogenous levels of SCLY at Human/Mouse/Rat
<b>Formulation</b>	Liquid in PBS containing 50% glycerol, 0.5% BSA and 0.02% sodium azide.
<b>Source</b>	Polyclonal, Rabbit,IgG
<b>Purification</b>	The antibody was affinity-purified from rabbit serum by affinity-chromatography using specific immunogen.
<b>Dilution</b>	WB 1: 500-2000
<b>Concentration</b>	1 mg/ml
<b>Purity</b>	≥90%
<b>Storage Stability</b>	-20°C/1 year
<b>Synonyms</b>	
<b>Observed Band</b>	
<b>Cell Pathway</b>	Cytoplasm, cytosol .
<b>Tissue Specificity</b>	
<b>Function</b>	catalytic activity:L-selenocysteine + reduced acceptor = selenide + L-alanine + acceptor.,cofactor:Pyridoxal phosphate.,function:Catalyzes the decomposition of L-selenocysteine to L-alanine and elemental selenium.,induction:Up-regulated in acute glomerulonephritis. Regulated by AP-1.,similarity:Belongs to the class-V pyridoxal-phosphate-dependent aminotransferase family.,subunit:Homodimer.,
<b>Background</b>	Selenocysteine lyase (SCLY; EC 4.4.1.16) catalyzes the pyridoxal 5-prime phosphate-dependent conversion of L-selenocysteine to L-alanine and elemental selenium (Mihara et al., 2000 [PubMed 10692412]).[supplied by OMIM, Mar 2008],

**Nanjing BYabscience technology Co.,Ltd**

网址: [www.njbybio.com](http://www.njbybio.com)

官方热线: 025-5229-8998

监督电话: 15950492658



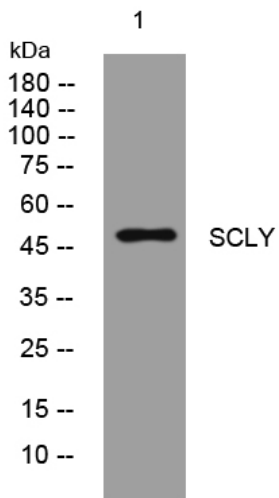
**matters needing attention**

Avoid repeated freezing and thawing!

**Usage suggestions**

This product can be used in immunological reaction related experiments. For more information, please consult technical personnel.

## Products Images



Western blot analysis of lysates from SH-SY5Y cells, primary antibody was diluted at 1:1000, 4° over night