



# STX17 rabbit pAb

Catalog No	BYab-09027
Isotype	IgG
Reactivity	Human; Mouse;Rat
Applications	WB
Gene Name	STX17
Protein Name	STX17
Immunogen	Synthesized peptide derived from human STX17 AA range: 30-80
Specificity	This antibody detects endogenous levels of STX17 at Human/Mouse/Rat
Formulation	Liquid in PBS containing 50% glycerol, 0.5% BSA and 0.02% sodium azide.
Source	Polyclonal, Rabbit,IgG
Purification	The antibody was affinity-purified from rabbit serum by affinity-chromatography using specific immunogen.
Dilution	WB 1: 500-2000
Concentration	1 mg/ml
Purity	≥90%
Storage Stability	-20°C/1 year
Synonyms	
Observed Band	
Cell Pathway	Endoplasmic reticulum membrane ; Multi-pass membrane protein . Smooth endoplasmic reticulum membrane ; Multi-pass membrane protein . Endoplasmic reticulum-Golgi intermediate compartment membrane ; Multi-pass membrane protein . Cytoplasmic vesicle, autophagosome membrane ; Multi-pass membrane protein . Cytoplasmic vesicle, COPII-coated vesicle membrane ; Multi-pass membrane protein . Cytoplasm, cytosol . Mitochondrion membrane ; Multi-pass membrane protein . Has a hairpin-like insertion into membranes. Localizes to the completed autophagosome membrane upon cell starvation (PubMed:23217709).
Tissue Specificity	
Function	function:Implicated in vesicle trafficking to lysosomes. Could be involved in processes related to cell division.,similarity:Belongs to the syntaxin family.,similarity:Contains 1 t-SNARE coiled-coil homology domain.,subcellular location:Appears to be associated with a membrane compartment, perhaps a subset of the ER such as exit or entrance sites.,

Nanjing BYabscience technology Co.,Ltd



## Background

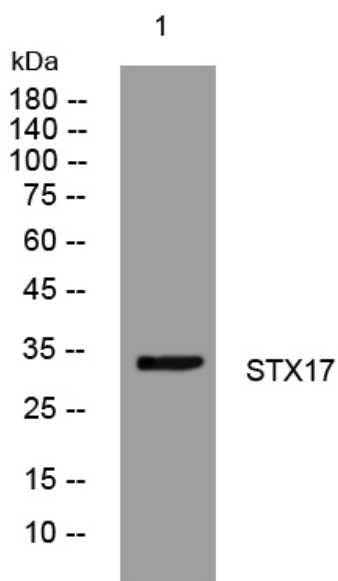
### matters needing attention

Avoid repeated freezing and thawing!

### Usage suggestions

This product can be used in immunological reaction related experiments. For more information, please consult technical personnel.

## Products Images



Western blot analysis of lysates from Jarkat cells,  
primary antibody was diluted at 1:1000, 4°over night