



YN4201

## CP080 rabbit pAb

Catalog No	BYab-09041
Isotype	IgG
Reactivity	Human; Mouse;Rat
Applications	WB
Gene Name	C16orf80
Protein Name	CP080
Immunogen	Synthesized peptide derived from human CP080 AA range: 33-83
Specificity	This antibody detects endogenous levels of CP080 at Human/Mouse/Rat
Formulation	Liquid in PBS containing 50% glycerol, 0.5% BSA and 0.02% sodium azide.
Source	Polyclonal, Rabbit,IgG
Purification	The antibody was affinity-purified from rabbit serum by affinity-chromatography using specific immunogen.
Dilution	WB 1: 500-2000
Concentration	1 mg/ml
Purity	≥90%
Storage Stability	-20°C/1 year
Synonyms	
Observed Band	
Cell Pathway	Nucleus. Cytoplasm, cytoskeleton, microtubule organizing center, centrosome, centriole. Cytoplasm, cytoskeleton, cilium basal body. Cell projection, cilium.
Tissue Specificity	
Function	similarity:Belongs to the UPF0468 family.,
Background	
matters needing attention	Avoid repeated freezing and thawing!

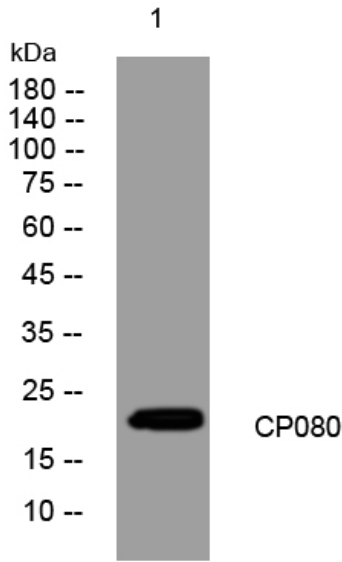
Nanjing BYabscience technology Co.,Ltd



### Usage suggestions

This product can be used in immunological reaction related experiments. For more information, please consult technical personnel.

### Products Images



Western blot analysis of lysates from HpeG2 cells, primary antibody was diluted at 1:1000, 4° over night