



TMPS7 rabbit pAb

Catalog No	BYab-09068
Isotype	IgG
Reactivity	Human; Mouse;Rat
Applications	WB
Gene Name	TMPRSS7
Protein Name	TMPS7
Immunogen	Synthesized peptide derived from human TMPS7 AA range: 87-137
Specificity	This antibody detects endogenous levels of TMPS7 at Human/Mouse/Rat
Formulation	Liquid in PBS containing 50% glycerol, 0.5% BSA and 0.02% sodium azide.
Source	Polyclonal, Rabbit,IgG
Purification	The antibody was affinity-purified from rabbit serum by affinity-chromatography using specific immunogen.
Dilution	WB 1: 500-2000
Concentration	1 mg/ml
Purity	≥90%
Storage Stability	-20°C/1 year
Synonyms	
Observed Band	
Cell Pathway	Cell membrane ; Single-pass type II membrane protein .
Tissue Specificity	Expressed in brain, ovary, testis, salivary gland, trachea and lung.
Function	function:Serine protease which preferentially hydrolyzes peptides with Arg at the P1 position.,PTM:N-glycosylated.,sequence caution:Differs at the N-terminus for unknown reasons.,sequence caution:Translation N-terminally extended.,similarity:Belongs to the peptidase S1 family.,similarity:Contains 1 peptidase S1 domain.,similarity:Contains 2 CUB domains.,similarity:Contains 2 LDL-receptor class A domains.,tissue specificity:Expressed in brain, ovary, testis, salivary gland, trachea and lung.,
Background	

Nanjing BYabscience technology Co.,Ltd

网址: www.njbybio.com

官方热线: 025-5229-8998

监督电话: 15950492658



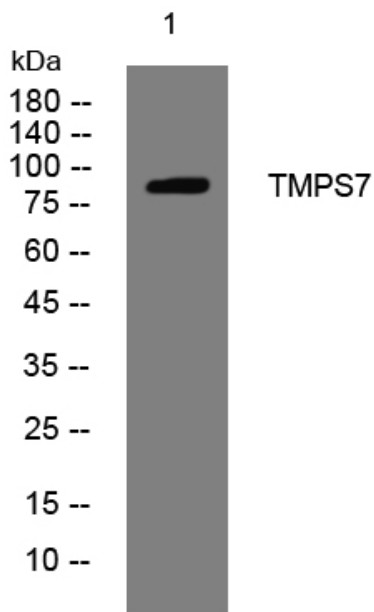
matters needing attention

Avoid repeated freezing and thawing!

Usage suggestions

This product can be used in immunological reaction related experiments. For more information, please consult technical personnel.

Products Images



Western blot analysis of lysates from MCF-7 cells, primary antibody was diluted at 1:1000, 4° over night