



ASB9 rabbit pAb

Catalog No	BYab-09078
Isotype	IgG
Reactivity	Human; Mouse
Applications	WB
Gene Name	ASB9
Protein Name	ASB9
Immunogen	Synthesized peptide derived from human ASB9 AA range: 169-219
Specificity	This antibody detects endogenous levels of ASB9 at Human/Mouse
Formulation	Liquid in PBS containing 50% glycerol, 0.5% BSA and 0.02% sodium azide.
Source	Polyclonal, Rabbit,IgG
Purification	The antibody was affinity-purified from rabbit serum by affinity-chromatography using specific immunogen.
Dilution	WB 1: 500-2000
Concentration	1 mg/ml
Purity	≥90%
Storage Stability	-20°C/1 year
Synonyms	
Observed Band	
Cell Pathway	Mitochondrion .
Tissue Specificity	Predominantly expressed in testis, kidney, and liver.
Function	domain:The SOCS box domain mediates the interaction with the Elongin BC complex, an adapter module in different E3 ubiquitin-protein ligase complexes.,function:May be a substrate-recognition component of a SCF-like ECS (Elongin-Cullin-SOCS-box protein) E3 ubiquitin-protein ligase complex which mediates the ubiquitination and subsequent proteasomal degradation of target proteins.,pathway:Protein modification; protein ubiquitination.,similarity:Contains 1 SOCS box domain.,similarity:Contains 6 ANK repeats.,
Background	This gene encodes a member of the ankyrin repeat and suppressor of cytokine signaling (SOCS) box protein family. Members of this family can interact with the elongin B-C adapter complex via their SOCS box domain and further complex with

Nanjing BYabscience technology Co.,Ltd



the cullin and ring box proteins to form E3 ubiquitin ligase complexes. They may function to mediate the substrate-recognition of the E3 ubiquitin ligases. A transcribed pseudogene of this gene has been identified on chromosome 15. Multiple transcript variants encoding different isoforms have been found for this gene. [provided by RefSeq, Dec 2009],

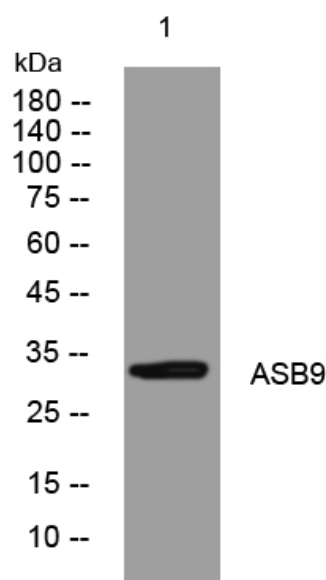
matters needing attention

Avoid repeated freezing and thawing!

Usage suggestions

This product can be used in immunological reaction related experiments. For more information, please consult technical personnel.

Products Images



Western blot analysis of lysates from VEC cells, primary antibody was diluted at 1:1000, 4° over night