



YN4299

SH3G1 rabbit pAb

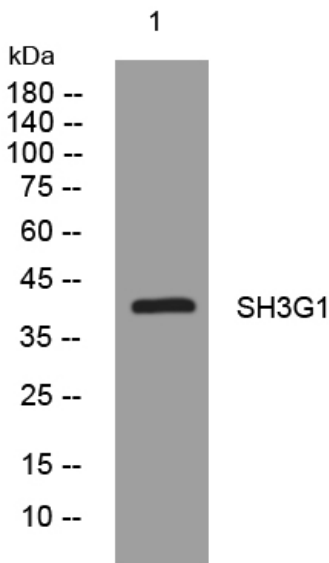
Catalog No	BYab-09139
Isotype	IgG
Reactivity	Human; Mouse;Rat
Applications	WB
Gene Name	SH3GL1 CNSA1 SH3D2B
Protein Name	SH3G1
Immunogen	Synthesized peptide derived from human SH3G1 AA range: 112-162
Specificity	This antibody detects endogenous levels of SH3G1 at Human/Mouse/Rat
Formulation	Liquid in PBS containing 50% glycerol, 0.5% BSA and 0.02% sodium azide.
Source	Polyclonal, Rabbit,IgG
Purification	The antibody was affinity-purified from rabbit serum by affinity-chromatography using specific immunogen.
Dilution	WB 1: 500-2000
Concentration	1 mg/ml
Purity	≥90%
Storage Stability	-20°C/1 year
Synonyms	
Observed Band	
Cell Pathway	Cytoplasm . Early endosome membrane ; Peripheral membrane protein . Cell projection, podosome . Associated with postsynaptic endosomes in hippocampal neurons. .
Tissue Specificity	Ubiquitous. Higher expression in pancreas, placenta, prostate, testis and uterus.
Function	disease:In some cases of acute leukemia, a translocation results in the formation of a MLL-EEN fusion gene.,domain:An N-terminal amphipathic helix, the BAR domain and a second amphipathic helix inserted into helix 1 of the BAR domain (N-BAR domain) induce membrane curvature and bind curved membranes.,function:Implicated in endocytosis. May recruit other proteins to membranes with high curvature.,similarity:Belongs to the endophilin

Nanjing BYabscience technology Co.,Ltd



	family.,similarity:Contains 1 BAR domain.,similarity:Contains 1 SH3 domain.,subcellular location:Associated with postsynaptic endosomes in hippocampal neurons.,subunit:Interacts with ARC (By similarity). Interacts with SYNJ1 and DNM1. Interacts with PDCD6IP.,tissue specificity:Ubiquitous. Higher expression in pancreas, placenta, prostate, testis and uterus.,
Background	This gene encodes a member of the endophilin family of Src homology 3 domain-containing proteins. The encoded protein is involved in endocytosis and may also play a role in the cell cycle. Overexpression of this gene may play a role in leukemogenesis, and the encoded protein has been implicated in acute myeloid leukemia as a fusion partner of the myeloid-lymphoid leukemia protein. Pseudogenes of this gene are located on the long arm of chromosomes 11 and 17. Alternatively spliced transcript variants encoding multiple isoforms have been observed for this gene. [provided by RefSeq, Jan 2011],
matters needing attention	Avoid repeated freezing and thawing!
Usage suggestions	This product can be used in immunological reaction related experiments. For more information, please consult technical personnel.

Products Images



Nanjing BYabscience technology Co.,Ltd

网址: www.njbybio.com

官方热线: 025-5229-8998

监督电话: 15950492658