



PAPAS rabbit pAb

Catalog No	BYab-09143
Isotype	IgG
Reactivity	Human;Rat;Mouse;
Applications	IHC;IF
Gene Name	PAPPA-AS1 DIPAS PAPPAS
Protein Name	PAPAS
Immunogen	Synthesized peptide derived from human PAPAS AA range: 48-98
Specificity	This antibody detects endogenous levels of PAPAS at Human
Formulation	Liquid in PBS containing 50% glycerol, 0.5% BSA and 0.02% sodium azide.
Source	Polyclonal, Rabbit,IgG
Purification	The antibody was affinity-purified from rabbit serum by affinity-chromatography using specific immunogen.
Dilution	IHC-p 1: 50-200. IF 1:50-200
Concentration	1 mg/ml
Purity	≥90%
Storage Stability	-20°C/1 year
Synonyms	
Observed Band	
Cell Pathway	Endoplasmic reticulum membrane ; Multi-pass membrane protein .
Tissue Specificity	Expressed in placenta with lower expression in brain, kidney and testis.
Function	catalytic activity:Cleavage of the 135-Met- -Lys-136 bond in insulin-like growth factor binding protein (IGFBP)-4, and the 143-Ser- -Lys-144 bond in IGFBP-5.,cofactor:Binds 1 zinc ion per subunit.,developmental stage:Present in serum and placenta during pregnancy; levels increase throughout pregnancy.,enzyme regulation:Inhibited by complexation with the proform of PRG2.,function:Metalloproteinase which specifically cleaves IGFBP-4 and IGFBP-5, resulting in release of bound IGF. Cleavage of IGFBP-4 is dramatically enhanced by the presence of IGF, whereas cleavage of IGFBP-5 is slightly inhibited by the presence of IGF.,induction:By 8-bromoadenosine-3',5'-phosphate.,PTM:There appear to be no free sulfhydryl groups.,similarity:Belongs to the peptidase M43B family.,similarity:Contains 5 Sushi (CCP/SCR) domains.,subunit:Homodimer; disulfide-linked. In pregnancy

Nanjing BYabscience technology Co.,Ltd



serum, predominantly found as a

Background

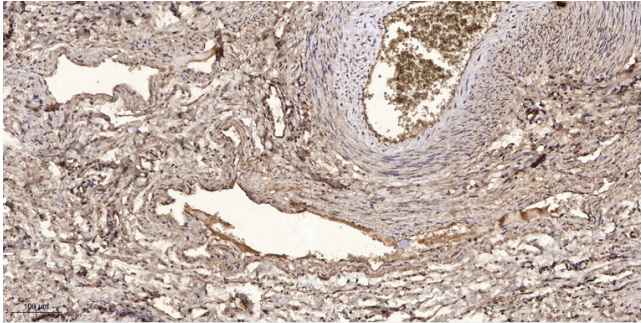
matters needing attention

Avoid repeated freezing and thawing!

Usage suggestions

This product can be used in immunological reaction related experiments. For more information, please consult technical personnel.

Products Images



Immunohistochemical analysis of paraffin-embedded human oophoroma. 1, Antibody was diluted at 1:200(4° overnight). 2, Tris-EDTA,pH9.0 was used for antigen retrieval. 3,Secondary antibody was diluted at 1:200(room temperature, 45min).