



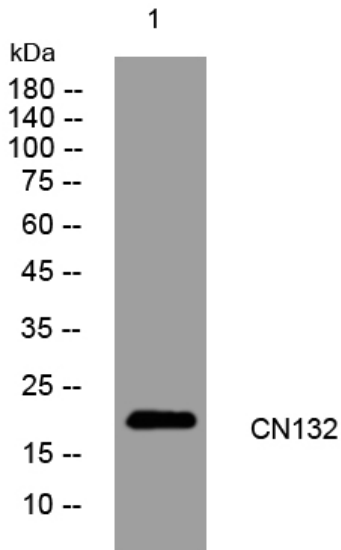
# CN132 rabbit pAb

|                           |   |
|---------------------------|---|
| Catalog No                | BYab-09152  |
| Isotype                   | IgG   |
| Reactivity                | Human;Rat;Mouse;  |
| Applications              | WB  |
| Gene Name                 | C14orf132   |
| Protein Name              | CN132   |
| Immunogen                 | Synthesized peptide derived from human CN132 AA range: 58-108   |
| Specificity               | This antibody detects endogenous levels of CN132 at Human   |
| Formulation               | Liquid in PBS containing 50% glycerol, 0.5% BSA and 0.02% sodium azide.   |
| Source                    | Polyclonal, Rabbit,IgG  |
| Purification              | The antibody was affinity-purified from rabbit serum by affinity-chromatography using specific immunogen.                         |
| Dilution                  | WB 1: 500-2000  |
| Concentration             | 1 mg/ml   |
| Purity                    | ≥90%  |
| Storage Stability         | -20°C/1 year  |
| Synonyms                  |   |
| Observed Band             |   |
| Cell Pathway              | Membrane ; Single-pass membrane protein .   |
| Tissue Specificity        |   |
| Function                  |   |
| Background                |   |
| matters needing attention | Avoid repeated freezing and thawing!  |
| Usage suggestions         | This product can be used in immunological reaction related experiments. For more information, please consult technical personnel. |

Nanjing BYabscience technology Co.,Ltd



## Products Images



Western blot analysis of lysates from HCT116 cells,  
primary antibody was diluted at 1:1000, 4° over night