



# HACD3 rabbit pAb

<b>Catalog No</b>	BYab-09156
<b>Isotype</b>	IgG
<b>Reactivity</b>	Human; Mouse
<b>Applications</b>	WB
<b>Gene Name</b>	PTPLAD1 BIND1 HACD3
<b>Protein Name</b>	HACD3
<b>Immunogen</b>	Synthesized peptide derived from human HACD3 AA range: 255-305
<b>Specificity</b>	This antibody detects endogenous levels of HACD3 at Human/Mouse
<b>Formulation</b>	Liquid in PBS containing 50% glycerol, 0.5% BSA and 0.02% sodium azide.
<b>Source</b>	Polyclonal, Rabbit,IgG
<b>Purification</b>	The antibody was affinity-purified from rabbit serum by affinity-chromatography using specific immunogen.
<b>Dilution</b>	WB 1: 500-2000
<b>Concentration</b>	1 mg/ml
<b>Purity</b>	≥90%
<b>Storage Stability</b>	-20°C/1 year
<b>Synonyms</b>	
<b>Observed Band</b>	
<b>Cell Pathway</b>	Endoplasmic reticulum membrane ; Multi-pass membrane protein .
<b>Tissue Specificity</b>	Highly expressed in testis, kidney, brain, liver and weakly in skeletal muscle, spleen and heart. No expression detected in leukocytes.
<b>Function</b>	function:Involved in Rac1-signaling pathways leading to the modulation of gene expression.,induction:By AKAP12 and histone deacetylase inhibitors such as sodium butyrate.,similarity:Belongs to the PTPLA family.,similarity:Contains 1 CS domain.,subunit:Interacts with RAC1.,tissue specificity:Highly expressed in testis, kidney, brain, liver and weakly in skeletal muscle, spleen and heart.,
<b>Background</b>	
<b>matters needing attention</b>	Avoid repeated freezing and thawing!

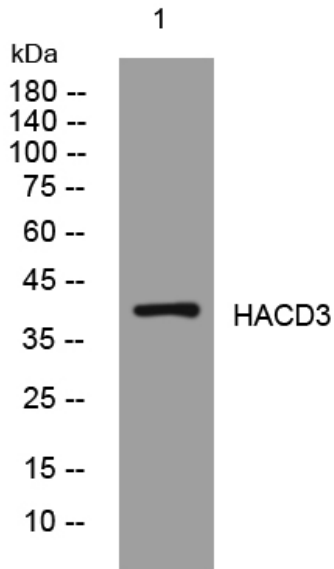
**Nanjing BYabscience technology Co.,Ltd**



### Usage suggestions

This product can be used in immunological reaction related experiments. For more information, please consult technical personnel.

### Products Images



Western blot analysis of lysates from U2OS cells,  
primary antibody was diluted at 1:1000, 4° over night