



LUC7L rabbit pAb

Catalog No	BYab-09158
Isotype	IgG
Reactivity	Human; Mouse
Applications	WB
Gene Name	LUC7L LUC7L1
Protein Name	LUC7L
Immunogen	Synthesized peptide derived from human LUC7L AA range: 43-93
Specificity	This antibody detects endogenous levels of LUC7L at Human/Mouse
Formulation	Liquid in PBS containing 50% glycerol, 0.5% BSA and 0.02% sodium azide.
Source	Polyclonal, Rabbit,IgG
Purification	The antibody was affinity-purified from rabbit serum by affinity-chromatography using specific immunogen.
Dilution	WB 1: 500-2000
Concentration	1 mg/ml
Purity	≥90%
Storage Stability	-20°C/1 year
Synonyms	
Observed Band	
Cell Pathway	U1 snRNP,U2-type prespliceosome,
Tissue Specificity	Ubiquitous.
Function	function:May bind to RNA via its Arg/Ser-rich domain.,similarity:Belongs to the Luc7 family.,similarity:Contains 1 C2H2-type zinc finger.,tissue specificity:Ubiquitous.,
Background	The LUC7L gene may represent a mammalian heterochromatic gene, encoding a putative RNA-binding protein similar to the yeast Luc7p subunit of the U1 snRNP splicing complex that is normally required for 5-prime splice site selection (Tufarelli et al., 2001 [PubMed 11170747]).[supplied by OMIM, Mar 2008],
matters needing attention	Avoid repeated freezing and thawing!

Nanjing BYabs science technology Co.,Ltd

网址: www.njbybio.com

官方热线: 025-5229-8998

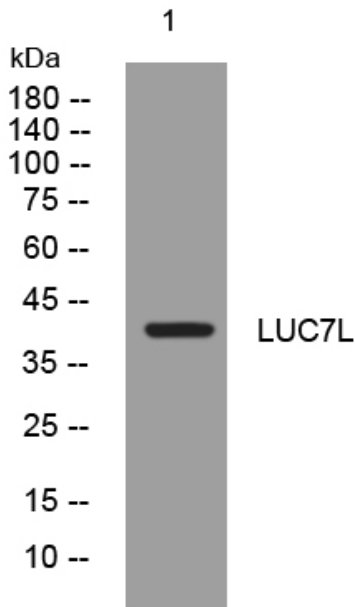
监督电话: 15950492658



Usage suggestions

This product can be used in immunological reaction related experiments. For more information, please consult technical personnel.

Products Images



Western blot analysis of lysates from CACO2 cells, primary antibody was diluted at 1:1000, 4° over night