



# NBR1 Rabbit Polyclonal Antibody

Catalog No	BYab-10273
Isotype	IgG
Reactivity	Human;Mouse;Rat
Applications	IHC;IF
Gene Name	NBR1 1A13B KIAA0049 M17S2 MIG19
Protein Name	Next to BRCA1 gene 1 protein (Cell migration-inducing gene 19 protein) (Membrane component chromosome 17 surface marker 2) (Neighbor of BRCA1 gene 1 protein) (Protein 1A1-3B)
Immunogen	Recombinant Protein of NBR1
Specificity	The antibody detects endogenous NBR1 protein
Formulation	Liquid in PBS containing 50% glycerol, 0.5% BSA and 0.02% sodium azide.
Source	Polyclonal, Rabbit,IgG
Purification	The antibody was affinity-purified from rabbit antiserum by affinity-chromatography using epitope-specific immunogen.
Dilution	IHC-p 1:50-300. IF 1:50-200
Concentration	1 mg/ml
Purity	≥90%
Storage Stability	-20°C/1 year
Synonyms	Next to BRCA1 gene 1 protein (Cell migration-inducing gene 19 protein;Membrane component chromosome 17 surface marker 2;Neighbor of BRCA1 gene 1 protein;Protein 1A1-3B)
Observed Band	120kD
Cell Pathway	Cytoplasm . Cytoplasmic vesicle, autophagosome . Lysosome . Cytoplasm, myofibril, sarcomere, M line . In cardiac muscles localizes to the sarcomeric M line (By similarity). Is targeted to lysosomes for degradation (PubMed:19250911). .
Tissue Specificity	Bone marrow,Lymph,Ovary,Testis,
Function	caution:Was originally (PubMed:8069304) thought to be the ovarian carcinoma antigen CA125.,domain:The OPR domain mediates interaction with SQSTM1.,similarity:Contains 1 OPR domain.,similarity:Contains 1 UBA domain.,similarity:Contains 1 ZZ-type zinc finger.,subunit:Homooligomer and heterooligomer. Interacts with SQSTM1, titin/TTN and RNF29.,

Nanjing BYabscience technology Co.,Ltd



## Background

The protein encoded by this gene was originally identified as an ovarian tumor antigen monitored in ovarian cancer. The encoded protein contains a B-box/coiled-coil motif, which is present in many genes with transformation potential. It functions as a specific autophagy receptor for the selective autophagic degradation of peroxisomes by forming intracellular inclusions with ubiquitylated autophagic substrates. This gene is located on a region of chromosome 17q21.1 that is in close proximity to the BRCA1 tumor suppressor gene. Alternative splicing of this gene results in multiple transcript variants. [provided by RefSeq, Apr 2014],

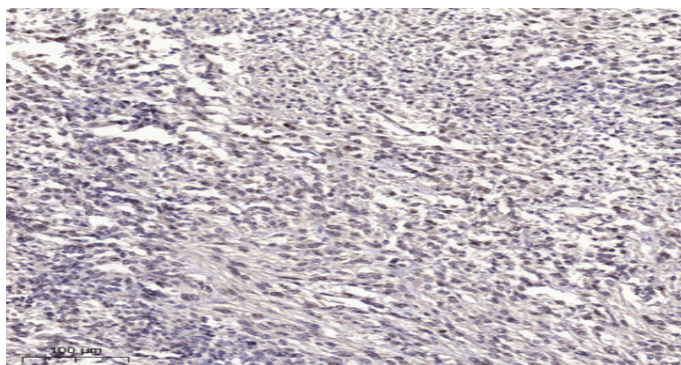
## matters needing attention

Avoid repeated freezing and thawing!

## Usage suggestions

This product can be used in immunological reaction related experiments. For more information, please consult technical personnel.

## Products Images



Immunohistochemical analysis of paraffin-embedded human small intestinal carcinoma tissue. 1, primary Antibody was diluted at 1:200(4° overnight). 2, Sodium citrate pH 6.0 was used for antigen retrieval(>98°C, 20min). 3, Secondary antibody was diluted at 1:200

**Nanjing BYabscience technology Co.,Ltd**

网址: [www.njbybio.com](http://www.njbybio.com)

官方热线: 025-5229-8998

监督电话: 15950492658