



Myc-Tag Polyclonal Antibody

Catalog No	BYab-10274
Isotype	IgG
Reactivity	Species independent
Applications	WB;ELISA;IP
Gene Name	Myc Tag
Protein Name	Myc-Tag
Immunogen	Synthetic peptide EQKLISEEDL coupled to KLH.
Specificity	The antibody detects C-Myc fusion proteins.
Formulation	PBS, pH 7.4, containing 0.5%BSA, 0.02% sodium azide as Preservative and 50% Glycerol.
Source	Polyclonal, Rabbit,IgG
Purification	The antibody was affinity-purified from rabbit antiserum by affinity-chromatography using specific immunogen.
Dilution	WB: 1:5000 IP: 1:200;ELISA 1:5000-20000
Concentration	1 mg/ml
Purity	≥90%
Storage Stability	-20°C/1 year
Synonyms	YM3203
Observed Band	
Cell Pathway	
Tissue Specificity	
Function	
Background	Myc tag is a polypeptide protein tag derived from the c-myc gene product that can be added to a protein using recombinant DNA technology. It can be used for affinity chromatography, and then used to separate recombinant, overexpressed protein from wild type protein expressed by the host organism. It can also be used in the isolation of protein complexes with multiple subunits.
matters needing attention	Avoid repeated freezing and thawing!

Nanjing BYabscience technology Co.,Ltd

网址: www.njbybio.com

官方热线: 025-5229-8998

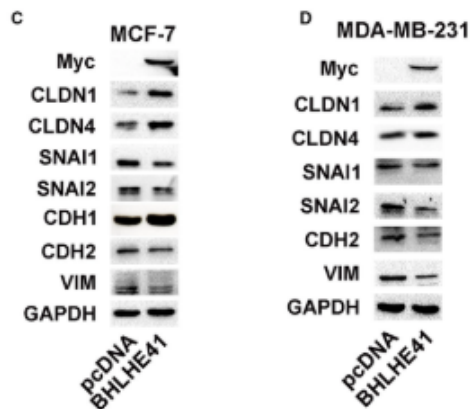
监督电话: 15950492658



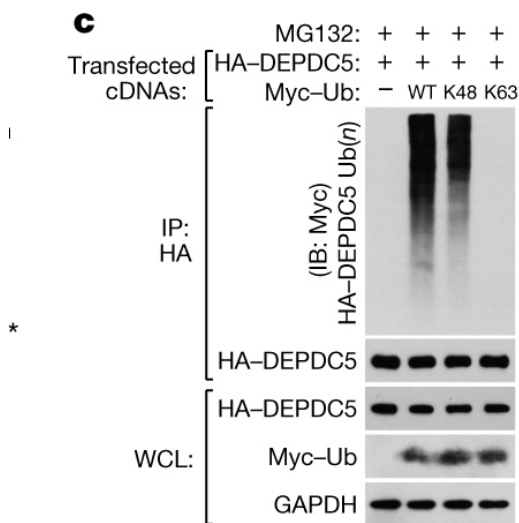
Usage suggestions

This product can be used in immunological reaction related experiments. For more information, please consult technical personnel.

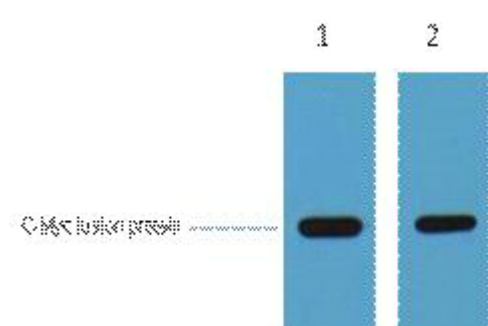
Products Images



Zhang, Di, et al. "BHLHE41 suppresses MCF-7 cell invasion via MAPK/JNK pathway." *Journal of cellular and molecular medicine* 24.7 (2020): 4001-4010.



Chen, Jie, et al. "KLHL22 activates amino-acid-dependent mTORC1 signalling to promote tumorigenesis and ageing." *Nature* (2018)



1ug C-Myc fusion protein+ Primary antibody dilution at
1) 1:5000 2) 1:20000. Secondary
antibody(catalog#:RS0002) was diluted at 1:20000