



ACE2 Rabbit pAb

Catalog No	BYab-10307
Isotype	IgG
Reactivity	Human; Mouse;Rat
Applications	IHC;WB
Gene Name	ACE2 UNQ868/PRO1885
Protein Name	ACE2
Immunogen	Synthesized peptide derived from human ACE2 AA range: 425-475
Specificity	This antibody detects endogenous levels of ACE2 at Human, Mouse,Rat
Formulation	Liquid in PBS containing 50% glycerol, 0.5% BSA and 0.06% sodium azide.
Source	Polyclonal, Rabbit,IgG
Purification	The antibody was affinity-purified from rabbit serum by affinity-chromatography using specific immunogen.
Dilution	IHC-p1:50-200 ,WB 1:1000-2000
Concentration	1 mg/ml
Purity	≥90%
Storage Stability	-20°C/1 year
Synonyms	Angiotensin-converting enzyme 2 (EC 3.4.17.23) (ACE-related carboxypeptidase) (Angiotensin-converting enzyme homolog) (ACEH) (Metalloprotease MPROT15) [Cleaved into: Processed angiotensin-converting enzyme 2]
Observed Band	120-135kD
Cell Pathway	[Processed angiotensin-converting enzyme 2]: Secreted .; Cell membrane ; Single-pass type I membrane protein . Cytoplasm . Cell projection, cilium . Apical cell membrane . Detected in both cell membrane and cytoplasm in neurons. .; [Isoform 2]: Apical cell membrane .
Tissue Specificity	Expressed in endothelial cells from small and large arteries, and in arterial smooth muscle cells (at protein level) (PubMed:15141377). Expressed in enterocytes of the small intestine, Leydig cells and Sertoli cells (at protein level) (PubMed:15141377). Expressed in the renal proximal tubule and the small intestine (at protein level) (PubMed:18424768). Expressed in heart, kidney, testis, and gastrointestinal system (at protein level) (PubMed:10969042, PubMed:10924499, PubMed:15231706, PubMed:12459472, PubMed:15671045, PubMed:32715618, PubMed:32170560). In lung, expressed at low levels in some alveolar type 2 cells, the expression seems to be individual-specific (at protein level) (PubMed:32425701, PubMed:15141377, PubMed:32715618,

Nanjing BYabs science technology Co.,Ltd



PubMed:32170560, PubMed:33432184). Expressed in nasal epith

Function

Background

angiotensin I converting enzyme 2(ACE2) Homo sapiens The protein encoded by this gene belongs to the angiotensin-converting enzyme family of dipeptidyl carboxydipeptidases and has considerable homology to human angiotensin 1 converting enzyme. This secreted protein catalyzes the cleavage of angiotensin I into angiotensin 1-9, and angiotensin II into the vasodilator angiotensin 1-7. The organ- and cell-specific expression of this gene suggests that it may play a role in the regulation of cardiovascular and renal function, as well as fertility. In addition, the encoded protein is a functional receptor for the spike glycoprotein of the human coronaviruses SARS and HCoV-NL63.

matters needing attention

Avoid repeated freezing and thawing!

Usage suggestions

This product can be used in immunological reaction related experiments. For more information, please consult technical personnel.

Nanjing BYabscience technology Co.,Ltd

网址: www.njbybio.com

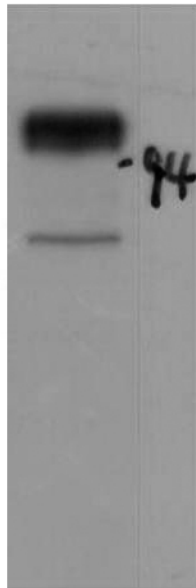
官方热线: 025-5229-8998

监督电话: 15950492658



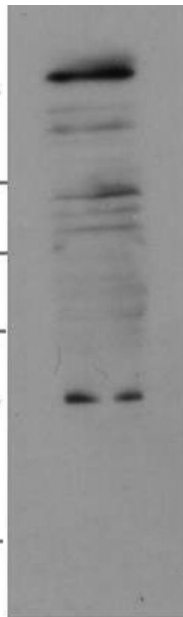
Products Images

94KD —
66KD —
45KD —
35KD —
27KD —
14KD —

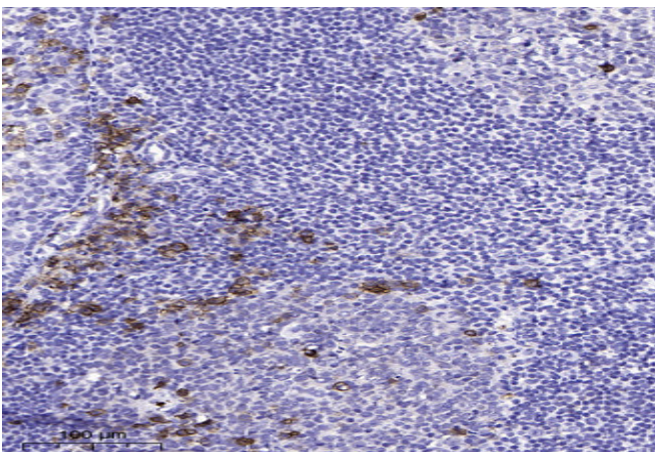


Western blot analysis of 293T transfected ACE2 cell
Lysate using Rabbit pAb diluted at 1:5,000.

94KD —
66KD —
45KD —
35KD —
27KD —
14KD —



Western blot analysis of HepG2 cell Lysate using
Rabbit pAb diluted at 1:2,000



Immunohistochemical analysis of paraffin-embedded
human tonsil. 1, Antibody was diluted at 1:200(4°
overnight). 2, Tris-EDTA,pH9.0 was used for antigen
retrieval. 3,Secondary antibody was diluted at
1:200(room temperature, 45min).

Nanjing BYabscience technology Co.,Ltd



Nanjing BYabscience technology Co.,Ltd

网址: www.njbybio.com

官方热线: 025-5229-8998

监督电话: 15950492658