



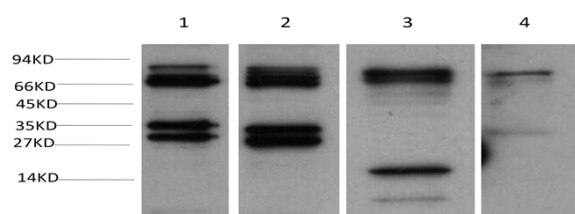
# SGT1/ECD Rabbit pAb

Catalog No	BYab-10317
Isotype	IgG
Reactivity	Human; Mouse;Rat
Applications	IHC;WB
Gene Name	ECD SGT1
Protein Name	SGT1/ECD
Immunogen	Synthesized peptide derived from human SGT1/ECD AA range: 236-286
Specificity	This antibody detects endogenous levels of SGT1/ECD at Human, Mouse,Rat
Formulation	Liquid in PBS containing 50% glycerol, 0.5% BSA and 0.81% sodium azide.
Source	Polyclonal, Rabbit,IgG
Purification	The antibody was affinity-purified from rabbit serum by affinity-chromatography using specific immunogen.
Dilution	IHC-p1:50-200 ,WB 1:1000-2000
Concentration	1 mg/ml
Purity	≥90%
Storage Stability	-20°C/1 year
Synonyms	Protein SGT1 (hSGT1) (Protein ecdysoneless homolog) (Suppressor of GCR2)
Observed Band	73kD
Cell Pathway	Cytoplasm . Nucleus . Predominantly is located in the cytoplasm. .
Tissue Specificity	Highly expressed in muscle and heart. Over-expressed in pancreatic and breast cancers.
Function	
Background	
matters needing attention	Avoid repeated freezing and thawing!
Usage suggestions	This product can be used in immunological reaction related experiments. For more information, please consult technical personnel.

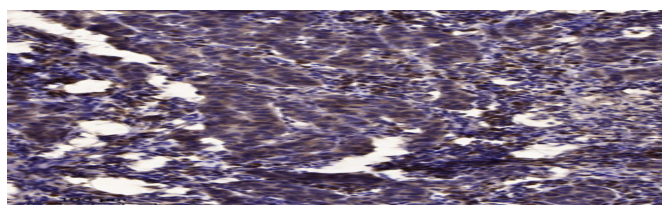
Nanjing BYabscience technology Co.,Ltd



## Products Images



Western blot analysis of 1)Hela Cell, 2) 293T Cell, 3)Mouse Brain Tissue, 4) Rat Brain Tissue Lysate using SGT1/ECDRabbit polyclonal Antibody diluted at 1:2,000.



Immunohistochemical analysis of paraffin-embedded human Breast cancer. 1, Antibody was diluted at 1:200(4° overnight). 2, Tris-EDTA,pH9.0 was used for antigen retrieval. 3,Secondary antibody was diluted at 1:200(room temperature, 45min).