



STIP1/HOP Rabbit pAb

Catalog No	BYab-10318
Isotype	IgG
Reactivity	Human; Mouse;Rat
Applications	IHC;WB
Gene Name	STIP1
Protein Name	STIP1/HOP
Immunogen	Synthesized peptide derived from human STIP1/HOP AA range: 250-300
Specificity	This antibody detects endogenous levels of STIP1/HOP at Human, Mouse,Rat
Formulation	Liquid in PBS containing 50% glycerol, 0.5% BSA and 0.82% sodium azide.
Source	Polyclonal, Rabbit,IgG
Purification	The antibody was affinity-purified from rabbit serum by affinity-chromatography using specific immunogen.
Dilution	IHC-p1:50-200 ,WB 1:1000-2000
Concentration	1 mg/ml
Purity	≥90%
Storage Stability	-20°C/1 year
Synonyms	Stress-induced-phosphoprotein 1 (STI1) (Hsc70/Hsp90-organizing protein) (Hop) (Renal carcinoma antigen NY-REN-11) (Transformation-sensitive protein IEF SSP 3521)
Observed Band	64kD
Cell Pathway	Cytoplasm . Nucleus . Dynein axonemal particle .
Tissue Specificity	B-cell lymphoma,Brain,Cajal-Retzius cell,Epithelium,Fetal brain cortex,Kera
Function	domain:The TPR 1 repeat interacts with the C-terminal of HSC70. The TPR 4, 5 and 6 repeats (also called TPR2A domain) and TPR 7, 8 and 9 repeats (also called TPR2B domain) interact with HSP90.,function:Mediates the association of the molecular chaperones HSC70 and HSP90 (HSPCA and HSPCB).,similarity:Contains 2 STI1 domains.,similarity:Contains 9 TPR repeats.,subunit:Forms a complex with HSC70 and HSPCA/HSP-86 and HSPCB/HSP-84. Interacts with PACRG.,
Background	STIP1 is an adaptor protein that coordinates the functions of HSP70 (see HSPA1A; MIM 140550) and HSP90 (see HSP90AA1; MIM 140571) in protein

Nanjing BYabscience technology Co.,Ltd



folding. It is thought to assist in the transfer of proteins from HSP70 to HSP90 by binding both HSP90 and substrate-bound HSP70. STIP1 also stimulates the ATPase activity of HSP70 and inhibits the ATPase activity of HSP90, suggesting that it regulates both the conformations and ATPase cycles of these chaperones (Song and Masison, 2005 [PubMed 16100115]).[supplied by OMIM, Jul 2009],

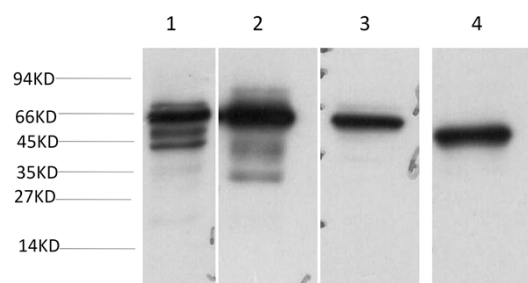
matters needing attention

Avoid repeated freezing and thawing!

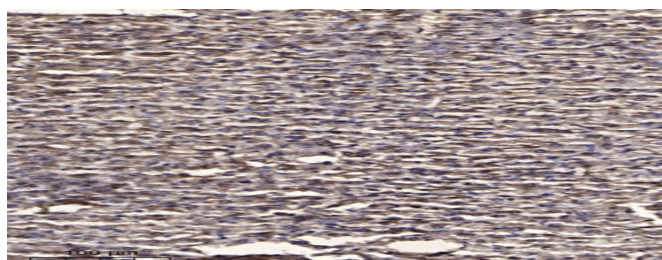
Usage suggestions

This product can be used in immunological reaction related experiments. For more information, please consult technical personnel.

Products Images



Western blot analysis of 1)Hela Cell, 2) 293T Cell, 3)Mouse Brain Tissue, 4) Rat Brain Tissue Lysate using STIP1/HOPRabbit polyclonal Antibody diluted at 1:2,000.



Immunohistochemical analysis of paraffin-embedded human liver cancer. 1, Antibody was diluted at 1:200(4° overnight). 2, Tris-EDTA,pH9.0 was used for antigen retrieval. 3,Secondary antibody was diluted at 1:200(room temperature, 45min).