



RanBP3 (phospho-Ser58) rabbit pAb

Catalog No	BYab-10397
Isotype	IgG
Reactivity	Human;Rat;Mouse;
Applications	WB;ELISA;IHC
Gene Name	RANBP3
Protein Name	RanBP3 (Ser58)
Immunogen	Synthesized phosho peptide around human RanBP3 (Ser58)
Specificity	This antibody detects endogenous levels of Human RanBP3 (phospho-Ser58)
Formulation	Liquid in PBS containing 50% glycerol, 0.5% BSA and 0.02% sodium azide.
Source	Polyclonal, Rabbit,IgG
Purification	The antibody was affinity-purified from rabbit serum by affinity-chromatography using specific immunogen.
Dilution	WB 1:500-2000;IHC-p 1:50-300; ELISA 2000-20000
Concentration	1 mg/ml
Purity	≥90%
Storage Stability	-20°C/1 year
Synonyms	Ran-binding protein 3 (RanBP3)
Observed Band	60kD
Cell Pathway	Cytoplasm . Nucleus .
Tissue Specificity	Widely expressed with high levels in testis and heart.
Function	function:Acts as a cofactor for XPO1/CRM1-mediated nuclear export, perhaps as export complex scaffolding protein. Bound to XPO1/CRM1, stabilizes the XPO1/CRM1-cargo interaction. In the absence of Ran-bound GTP prevents binding of XPO1/CRM1 to the nuclear pore complex. Binds to CHC1/RCC1 and increases the guanine nucleotide exchange activity of CHC1/RCC1. Recruits XPO1/CRM1 to CHC1/RCC1 in a Ran-dependent manner.,PTM:Phosphorylated upon DNA damage, probably by ATM or ATR.,similarity:Contains 1 RanBD1 domain.,subunit:Interacts with CHC1 in a Ran-stimulated manner. Interacts with XPO1.,tissue specificity:Widely expressed with high levels in testis and heart.,
Background	This gene encodes a protein with a RanBD1 domain that is found in both the nucleus and cytoplasm. This protein plays a role in nuclear export as part of a

Nanjing BYabscience technology Co.,Ltd



heteromeric complex. Alternate transcriptional splice variants, encoding different isoforms, have been characterized. [provided by RefSeq, Jul 2008],

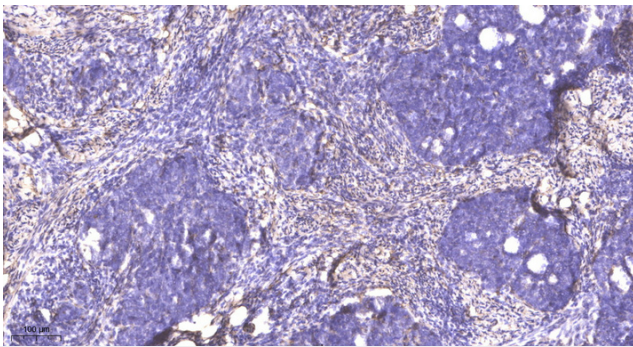
matters needing attention

Avoid repeated freezing and thawing!

Usage suggestions

This product can be used in immunological reaction related experiments. For more information, please consult technical personnel.

Products Images



Immunohistochemical analysis of paraffin-embedded human cervical carcinoma. 1, Antibody was diluted at 1:200(4° overnight). 2, Tris-EDTA,pH9.0 was used for antigen retrieval. 3,Secondary antibody was diluted at 1:200(room temperature, 45min).

Nanjing BYabscience technology Co.,Ltd

网址: www.njbybio.com

官方热线: 025-5229-8998

监督电话: 15950492658