



MAP3K2 (Phospho-Ser520) rabbit pAb

Catalog No	BYab-10475
Isotype	IgG
Reactivity	Human; Mouse;Rat
Applications	WB
Gene Name	MAP3K2 MAPKKK2 MEKK2
Protein Name	MAP3K2 (Phospho-Ser520)
Immunogen	Synthesized peptide derived from human MAP3K2 (Phospho-Ser520)
Specificity	This antibody detects endogenous levels of MAP3K2 (Phospho-Ser520) at Human, Mouse,Rat
Formulation	Liquid in PBS containing 50% glycerol, and 0.130% sodium azide.
Source	Polyclonal, Rabbit,IgG
Purification	The antibody was affinity-purified from rabbit serum by affinity-chromatography using specific immunogen.
Dilution	WB 1:500-2000
Concentration	1 mg/ml
Purity	≥90%
Storage Stability	-20°C/1 year
Synonyms	Mitogen-activated protein kinase kinase kinase 2 (EC 2.7.11.25) (MAPK/ERK kinase kinase 2) (MEK kinase 2) (MEKK 2)
Observed Band	
Cell Pathway	Cytoplasm . Nucleus . Upon EGF stimulation, translocates into the nucleus.
Tissue Specificity	Brain,Platelet,T-cell,Teratocarcinoma,Whole embryo,
Function	catalytic activity:ATP + a protein = ADP + a phosphoprotein.,cofactor:Magnesium.,enzyme regulation:Activated by phosphorylation on Thr-524.,function:Component of a protein kinase signal transduction cascade. Regulates the JNK and ERK5 pathways by phosphorylating and activating MAP2K5 and MAP2K7 (By similarity). Plays a role in caveolae kiss-and-run dynamics.,PTM:Autophosphorylated.,similarity:Belongs to the protein kinase superfamily. STE Ser/Thr protein kinase family. MAP kinase kinase kinase subfamily.,similarity:Contains 1 OPR domain.,similarity:Contains 1 protein kinase domain.,subcellular location:Upon EGF stimulation, translocates into the nucleus.,subunit:Bounds both upstream activators and downstream substrates in multimolecular complexes.,

Nanjing BYabscience technology Co.,Ltd



Background

The protein encoded by this gene is a member of serine/threonine protein kinase family. This kinase preferentially activates other kinases involved in the MAP kinase signaling pathway. This kinase has been shown to directly phosphorylate and activate Ikappa B kinases, and thus plays a role in NF-kappa B signaling pathway. This kinase has also been found to bind and activate protein kinase C-related kinase 2, which suggests its involvement in a regulated signaling process. [provided by RefSeq, Jul 2008],

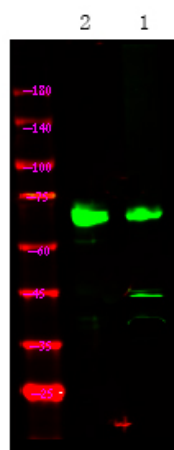
matters needing attention

Avoid repeated freezing and thawing!

Usage suggestions

This product can be used in immunological reaction related experiments. For more information, please consult technical personnel.

Products Images



Western Blot analysis of mouse liver ,using primary antibody at 1:1000 dilution. Secondary antibody(catalog#:RS23920) was diluted at 1:10000

Nanjing BYabscience technology Co.,Ltd

网址: www.njbybio.com

官方热线: 025-5229-8998

监督电话: 15950492658