



MNK2 (Phospho-Thr244) rabbit pAb

Catalog No	BYab-10477
Isotype	IgG
Reactivity	Human; Mouse;Rat
Applications	WB
Gene Name	MKNK2 GPRK7 MNK2
Protein Name	MNK2 (Phospho-Thr244)
Immunogen	Synthesized peptide derived from human MNK2 (Phospho-Thr244)
Specificity	This antibody detects endogenous levels of MNK2 (Phospho-Thr244) at Human, Mouse,Rat
Formulation	Liquid in PBS containing 50% glycerol, and 0.132% sodium azide.
Source	Polyclonal, Rabbit,IgG
Purification	The antibody was affinity-purified from rabbit serum by affinity-chromatography using specific immunogen.
Dilution	WB 1:500-2000
Concentration	1 mg/ml
Purity	≥90%
Storage Stability	-20°C/1 year
Synonyms	MAP kinase-interacting serine/threonine-protein kinase 2 (EC 2.7.11.1) (MAP kinase signal-integrating kinase 2) (MAPK signal-integrating kinase 2) (Mnk2)
Observed Band	
Cell Pathway	[Isoform 2]: Nucleus, PML body.; [Isoform 1]: Cytoplasm.
Tissue Specificity	Ubiquitously expressed in all tissues examined. Isoform 2 is expressed at higher levels in the ovary than is isoform 1.
Function	catalytic activity:ATP + a protein = ADP + a phosphoprotein.,cofactor:Binds 1 zinc ion per subunit.,cofactor:Magnesium.,function:May play a role in the response to environmental stress and cytokines. Appears to regulate transcription by phosphorylating EIF4E, thus increasing the affinity of this protein for the 7-methylguanosine-containing mRNA cap.,PTM: Dual phosphorylation of Thr-244 and Thr-249 activates the kinase. Phosphorylation of Thr-379 activates the kinase.,similarity:Belongs to the protein kinase superfamily. CAMK Ser/Thr protein kinase family.,similarity:Contains 1 protein kinase domain.,subunit:Monomer. Interacts with the C-terminal regions of EIF4G1 and EIF4G2. Also binds to dephosphorylated ERK1 and ERK2. Isoform 2 interacts with ESR2.,tissue specificity:Ubiquitously expressed in all tissues examined.

Nanjing BYabscience technology Co.,Ltd



Isoform 2 is expressed at higher levels in the ovary than is isoform 1.,

Background

MAP kinase interacting serine/threonine kinase 2(MKNK2) Homo sapiens
This gene encodes a member of the calcium/calmodulin-dependent protein kinases (CAMK) Ser/Thr protein kinase family, which belongs to the protein kinase superfamily. This protein contains conserved DLG (asp-leu-gly) and ENIL (glu-asn-ile-leu) motifs, and an N-terminal polybasic region which binds importin A and the translation factor scaffold protein eukaryotic initiation factor 4G (eIF4G). This protein is one of the downstream kinases activated by mitogen-activated protein (MAP) kinases. It phosphorylates the eukaryotic initiation factor 4E (eIF4E), thus playing important roles in the initiation of mRNA translation, oncogenic transformation and malignant cell proliferation. In addition to eIF4E, this protein also interacts with von Hippel-Lindau tumor suppressor (VHL), ring-box 1 (Rbx1) and Cullin2 (Cul2), which are all components of the CBC(VHL) ubiquitin ligase E3 complex.

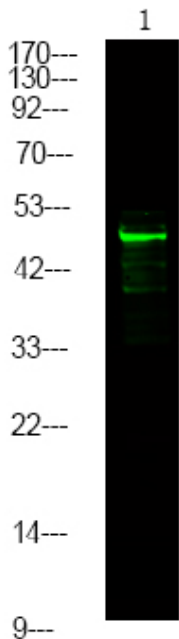
matters needing attention

Avoid repeated freezing and thawing!

Usage suggestions

This product can be used in immunological reaction related experiments. For more information, please consult technical personnel.

Products Images



Western Blot analysis of mouse liver ,using primary antibody at 1:1000 dilution. Secondary antibody(catalog#:RS23920) was diluted at 1:10000

Nanjing BYabscience technology Co.,Ltd

网址: www.njbybio.com

官方热线: 025-5229-8998

监督电话: 15950492658