



TIE1 (Phospho-Tyr1117) rabbit pAb

Catalog No	BYab-10502
Isotype	IgG
Reactivity	Human; Mouse;Rat
Applications	WB
Gene Name	TIE1 TIE
Protein Name	TIE1 (Phospho-Tyr1117)
Immunogen	Synthesized peptide derived from human TIE1 (Phospho-Tyr1117)
Specificity	This antibody detects endogenous levels of TIE1 (Phospho-Tyr1117) at Human, Mouse,Rat
Formulation	Liquid in PBS containing 50% glycerol, and 0.158% sodium azide.
Source	Polyclonal, Rabbit,IgG
Purification	The antibody was affinity-purified from rabbit serum by affinity-chromatography using specific immunogen.
Dilution	WB 1:500-2000
Concentration	1 mg/ml
Purity	≥90%
Storage Stability	-20°C/1 year
Synonyms	Tyrosine-protein kinase receptor Tie-1 (EC 2.7.10.1)
Observed Band	
Cell Pathway	Cell membrane ; Single-pass type I membrane protein .
Tissue Specificity	Specifically expressed in developing vascular endothelial cells.
Function	catalytic activity:ATP + a [protein]-L-tyrosine = ADP + a [protein]-L-tyrosine phosphate.,function:Probable protein tyrosine-kinase transmembrane receptor.,similarity:Belongs to the protein kinase superfamily. Tyr protein kinase family.,similarity:Belongs to the protein kinase superfamily. Tyr protein kinase family. Tie subfamily.,similarity:Contains 1 protein kinase domain.,similarity:Contains 2 Ig-like C2-type (immunoglobulin-like) domains.,similarity:Contains 3 EGF-like domains.,similarity:Contains 3 fibronectin type-III domains.,tissue specificity:Specifically expressed in developing vascular endothelial cells.,
Background	This gene encodes a member of the tyrosine protein kinase family. The encoded protein plays a critical role in angiogenesis and blood vessel stability by inhibiting

Nanjing BYabscience technology Co.,Ltd



angiopoietin 1 signaling through the endothelial receptor tyrosine kinase Tie2. Ectodomain cleavage of the encoded protein relieves inhibition of Tie2 and is mediated by multiple factors including vascular endothelial growth factor. Alternatively spliced transcript variants encoding multiple isoforms have been observed for this gene. [provided by RefSeq, Nov 2011],

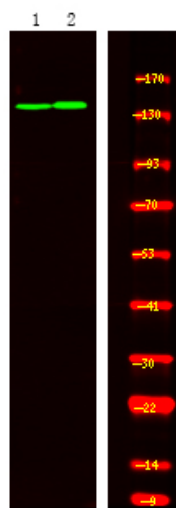
matters needing attention

Avoid repeated freezing and thawing!

Usage suggestions

This product can be used in immunological reaction related experiments. For more information, please consult technical personnel.

Products Images



Western Blot analysis of 1 K-562 cell, 2 LPS 100ng/mL 30min treated ,using primary antibody at 1:1000 dilution. Secondary antibody(catalog#:RS23920) was diluted at 1:10000