



PDE3A (Phospho-Ser312) rabbit pAb

Catalog No	BYab-10508
Isotype	IgG
Reactivity	Human; Mouse;Rat
Applications	WB
Gene Name	PDE3A
Protein Name	PDE3A (Phospho-Ser312)
Immunogen	Synthesized peptide derived from human PDE3A (Phospho-Ser312)
Specificity	This antibody detects endogenous levels of PDE3A (Phospho-Ser312) at Human, Mouse,Rat
Formulation	Liquid in PBS containing 50% glycerol, and 0.164% sodium azide.
Source	Polyclonal, Rabbit,IgG
Purification	The antibody was affinity-purified from rabbit serum by affinity-chromatography using specific immunogen.
Dilution	WB 1:500-2000
Concentration	1 mg/ml
Purity	≥90%
Storage Stability	-20°C/1 year
Synonyms	cGMP-inhibited 3',5'-cyclic phosphodiesterase A (EC 3.1.4.17) (Cyclic GMP-inhibited phosphodiesterase A) (CGI-PDE A)
Observed Band	
Cell Pathway	Membrane ; Multi-pass membrane protein . Cytoplasm, cytosol .
Tissue Specificity	Blood,Epithelium,Liver,Myocardium,Penis,Platelet,
Function	catalytic activity:Nucleoside 3',5'-cyclic phosphate + H(2)O = nucleoside 5'-phosphate.,enzyme regulation:Inhibited by cGMP.,function:Hydrolyzes both cyclic AMP (cAMP) and cyclic GMP (cGMP).,online information:PDE3 entry,similarity:Belongs to the cyclic nucleotide phosphodiesterase family.,
Background	This gene encodes a member of the cGMP-inhibited cyclic nucleotide phosphodiesterase (cGI-PDE) family. cGI-PDE enzymes hydrolyze both cAMP and cGMP, and play critical roles in many cellular processes by regulating the amplitude and duration of intracellular cyclic nucleotide signals. The encoded protein mediates platelet aggregation and also plays important roles in cardiovascular function by regulating vascular smooth muscle contraction and

Nanjing BYabscience technology Co.,Ltd



relaxation. Inhibitors of the encoded protein may be effective in treating congestive heart failure. Alternatively spliced transcript variants encoding multiple isoforms have been observed for this gene. [provided by RefSeq, Sep 2011],

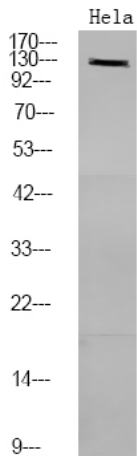
matters needing attention

Avoid repeated freezing and thawing!

Usage suggestions

This product can be used in immunological reaction related experiments. For more information, please consult technical personnel.

Products Images



Western Blot analysis of HeLa using primary antibody at 1:1000 dilution 4°C, overnight. Secondary antibody(catalog#:RS23920) was diluted at 1:10000 25°C, 1.5hours