



BCLAF1 (Phospho-Ser531) rabbit pAb

Catalog No	BYab-10552
Isotype	IgG
Reactivity	Human; Mouse;Rat
Applications	WB
Gene Name	BCLAF1 BTF KIAA0164
Protein Name	BCLAF1 (Phospho-Ser531)
Immunogen	Synthesized peptide derived from human BCLAF1 (Phospho-Ser531)
Specificity	This antibody detects endogenous levels of BCLAF1 (Phospho-Ser531) at Human, Mouse,Rat
Formulation	Liquid in PBS containing 50% glycerol, and 0.208% sodium azide.
Source	Polyclonal, Rabbit,IgG
Purification	The antibody was affinity-purified from rabbit serum by affinity-chromatography using specific immunogen.
Dilution	WB 1:500-2000
Concentration	1 mg/ml
Purity	≥90%
Storage Stability	-20°C/1 year
Synonyms	Bcl-2-associated transcription factor 1 (Btf)
Observed Band	
Cell Pathway	Cytoplasm. Nucleus. Nucleus speckle . Nucleus, nucleoplasm .
Tissue Specificity	Ubiquitous.
Function	function:Death-promoting transcriptional repressor.,sequence caution:Contaminating sequence. Potential poly-A sequence.,subunit:Interacts with Bcl-2 related proteins, EMD, with the adenovirus E1B 19 kDa protein and with DNA.,tissue specificity:Ubiquitous.,
Background	This gene encodes a transcriptional repressor that interacts with several members of the BCL2 family of proteins. Overexpression of this protein induces apoptosis, which can be suppressed by co-expression of BCL2 proteins. The protein localizes to dot-like structures throughout the nucleus, and redistributes to a zone near the nuclear envelope in cells undergoing apoptosis. Multiple transcript variants encoding different isoforms have been found for this gene. [provided by RefSeq, Jul 2008],

Nanjing BYabscience technology Co.,Ltd



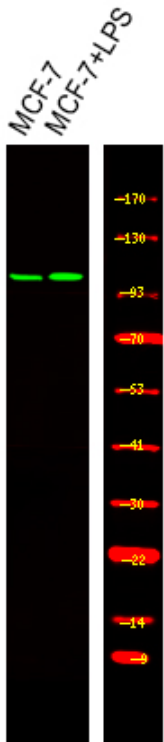
matters needing attention

Avoid repeated freezing and thawing!

Usage suggestions

This product can be used in immunological reaction related experiments. For more information, please consult technical personnel.

Products Images



Western Blot analysis of various,using primary antibody at 1:1000 dilution. Secondary antibody(catalog#:RS23920) was diluted at 1:10000