



NLRX1 Polyclonal Antibody

Catalog No	BYab-10611
Isotype	IgG
Reactivity	Human;Mouse;Rat
Applications	WB;IHC;IF;ELISA
Gene Name	NLRX1
Protein Name	NLRX1
Immunogen	The antiserum was produced against synthesized peptide derived from the Internal region of human NLRX1. AA range:581-630
Specificity	NLRX1 Polyclonal Antibody detects endogenous levels of NLRX1
Formulation	Liquid in PBS containing 50% glycerol, 0.5% BSA and 0.02% sodium azide.
Source	Polyclonal, Rabbit,IgG
Purification	The antibody was affinity-purified from rabbit antiserum by affinity-chromatography using epitope-specific immunogen.
Dilution	WB 1:500-2000, IHC-p 1:50-300, ELISA 1:10000-20000. IF 1:50-200
Concentration	1 mg/ml
Purity	≥90%
Storage Stability	-20°C/1 year
Synonyms	NLR family member X1 (Caterpillar protein 11.3;CLR11.3;Nucleotide-binding oligomerization domain protein 26;Nucleotide-binding oligomerization domain protein 5;Nucleotide-binding oligomerization domain protein 9)
Observed Band	108kD
Cell Pathway	Mitochondrion outer membrane .
Tissue Specificity	Ubiquitously expressed. Strongest expression in mammary gland, heart and muscle. Detected in HeLa, HEK293T, THP-1, HL-60, Raji and Jurkat cell lines (at protein level).
Function	function:Participates in antiviral signaling. Acts as a negative regulator of MAVS-mediated antiviral responses, through the inhibition of the virus-induced RLH (RIG-like helicase)-MAVS interaction (PubMed:18200010). Has no inhibitory function on NF-Kappa-B and type 1 interferon signaling pathways, but enhances NF-Kappa-B and JUN N-terminal kinase dependent signaling through the production of reactive oxygen species (PubMed:18219313).,sequence caution:Translated as Trp.,sequence caution:Translation N-terminally extended.,similarity:Belongs to the NLRP family.,similarity:Contains 1 NACHT

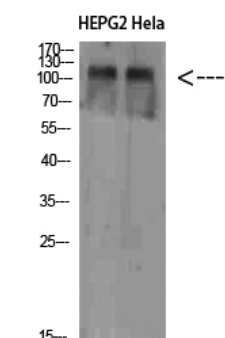
Nanjing BYabscience technology Co.,Ltd



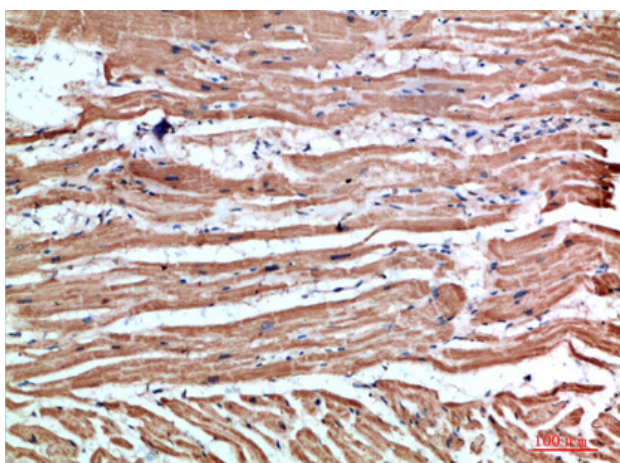
	domain.,similarity:Contains 4 LRR (leucine-rich) repeats.,subunit:Interacts with MAVS.,tissue specificity:Ubiquitously expressed. Strongest expression in mammary gland, heart and muscle. Detected in HELA, 293T, THP-1, HL60, RAJI, and JURKAT cell lines (at protein level).,
Background	The protein encoded by this gene is a member of the NLR family and localizes to the outer mitochondrial membrane. The encoded protein is a regulator of mitochondrial antiviral responses. Three transcript variants encoding the same protein have been found for this gene. [provided by RefSeq, Aug 2013],
matters needing attention	Avoid repeated freezing and thawing!
Usage suggestions	This product can be used in immunological reaction related experiments. For more information, please consult technical personnel.



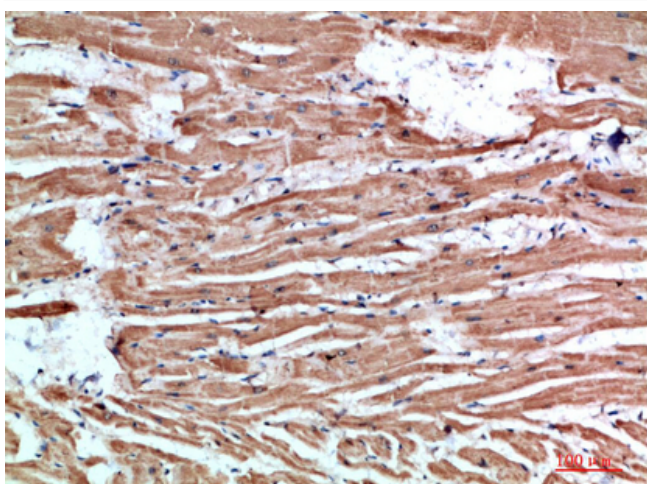
Products Images



Western Blot analysis of HEPG2 Hela cells using NLRX1 Polyclonal Antibody diluted at 1:1000. Secondary antibody(catalog#:RS0002) was diluted at 1:20000

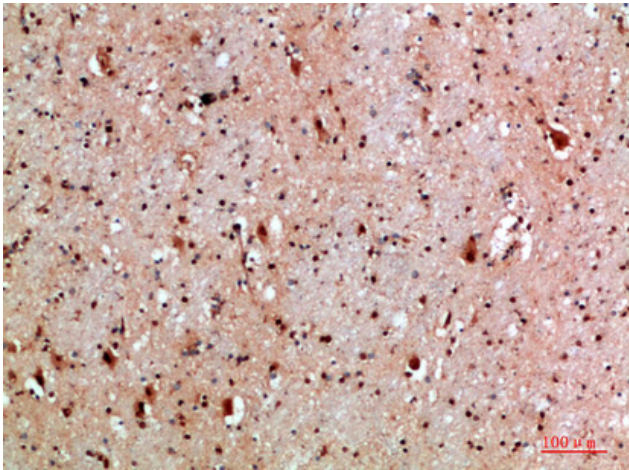


Immunohistochemical analysis of paraffin-embedded human-heart, antibody was diluted at 1:200



Immunohistochemical analysis of paraffin-embedded human-heart, antibody was diluted at 1:200

Immunohistochemical analysis of paraffin-embedded human-brain, antibody was diluted at 1:200



Immunohistochemical analysis of paraffin-embedded human-brain, antibody was diluted at 1:200

