



HLA Class I Polyclonal Antibody

Catalog No	BYab-10635
Isotype	IgG
Reactivity	Human
Applications	WB;ELISA
Gene Name	HLA-A HLAA
Protein Name	major histocompatibility complex, class I
Immunogen	The antiserum was produced against synthesized peptide derived from human HLA Class I. AA range:204-253
Specificity	The antibody detects endogenous HLA Class I protein
Formulation	Liquid in PBS containing 50% glycerol, 0.5% BSA and 0.02% sodium azide.
Source	Polyclonal, Rabbit,IgG
Purification	The antibody was affinity-purified from rabbit antiserum by affinity-chromatography using epitope-specific immunogen.
Dilution	WB 1:500-2000, ELISA 1:10000-20000
Concentration	1 mg/ml
Purity	≥90%
Storage Stability	-20°C/1 year
Synonyms	HLA-A HLAA
Observed Band	40kD
Cell Pathway	Golgi membrane,endoplasmic reticulum,Golgi apparatus,Golgi medial cisterna,plasma membrane,integral component of plasma membrane,cell surface,ER to Golgi transport vesicle membrane,membrane,integral component of membrane,
Tissue Specificity	A*3201,Blood,Brain,Buffy coat,Hematopoietic,Liver,Lung,Lymp
Function	function:Involved in the presentation of foreign antigens to the immune system.,polymorphism:The following alleles of A-1 are known: A*0101, A*0102, A*0103, A*0106 and A*0107. The sequence shown is that of A*0101.,polymorphism:The following alleles of A-11 are known: A*1101 (A-11E), A*1102 (A-11K), A*1103, A*1104, A*1105 and A*1107. The sequence shown is that of A*1101.,polymorphism:The following alleles of A-2 are known: A*0201, A*0202, A*0203, A*0204, A*0205, A*0206 (A2.4A), A*0207, A*0208, A*0209, A*0210, A*0211 (A2.5), A*0212, A*0213 (A*02SLU), A*0216, A*0217, A*0218 (A2K), A*0219, A*0220, A*0221, A*0231, A*0234 (A*AAT), A*0235, A*0236 and

Nanjing BYabscience technology Co.,Ltd



A*0237. The sequence shown is that of A*0201.,polymorphism:The following alleles of A-23 are known: A*2301, A*2302, A*2303, A*2304 and A*2305. The sequence shown is that of A*2301.,polymorphism:The following alleles of A-24 are known: A*2401, A*240

Background

HLA-A belongs to the HLA class I heavy chain paralogues. This class I molecule is a heterodimer consisting of a heavy chain and a light chain (beta-2 microglobulin). The heavy chain is anchored in the membrane. Class I molecules play a central role in the immune system by presenting peptides derived from the endoplasmic reticulum lumen. They are expressed in nearly all cells. The heavy chain is approximately 45 kDa and its gene contains 8 exons. Exon 1 encodes the leader peptide, exons 2 and 3 encode the alpha1 and alpha2 domains, which both bind the peptide, exon 4 encodes the alpha3 domain, exon 5 encodes the transmembrane region, and exons 6 and 7 encode the cytoplasmic tail. Polymorphisms within exon 2 and exon 3 are responsible for the peptide binding specificity of each class one molecule. Typing for these polymorphisms is routinely done for bone marrow and kidney trans

matters needing attention

Avoid repeated freezing and thawing!

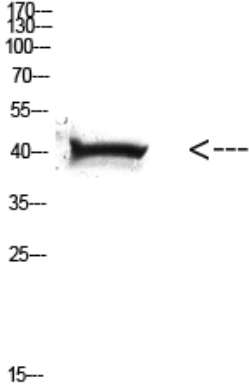
Usage suggestions

This product can be used in immunological reaction related experiments. For more information, please consult technical personnel.

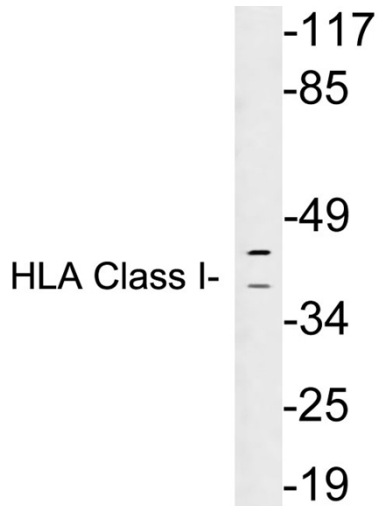
Nanjing BYabscience technology Co.,Ltd



Products Images



Western Blot analysis of HELA cells using Antibody diluted at 500. Secondary antibody(catalog#:RS0002) was diluted at 1:20000



Western blot analysis of lysates from Ramos cells, using HLA Class I antibody.