



PDGF-C Polyclonal Antibody

Catalog No	BYab-10685
Isotype	IgG
Reactivity	Human;Mouse;Rat
Applications	IHC;IF;ELISA
Gene Name	PDGFC SCDGF UNQ174/PRO200
Protein Name	Platelet-derived growth factor C (PDGF-C) (Fallotein) (Spinal cord-derived growth factor) (SCDGF) (VEGF-E) [Cleaved into: Platelet-derived growth factor C, latent form (PDGFC latent form); Platelet-de
Immunogen	Synthetic peptide from human protein at AA range: 61-110
Specificity	The antibody detects endogenous PDGF-C
Formulation	Liquid in PBS containing 50% glycerol, 0.5% BSA and 0.02% sodium azide.
Source	Polyclonal, Rabbit,IgG
Purification	The antibody was affinity-purified from rabbit antiserum by affinity-chromatography using epitope-specific immunogen.
Dilution	IHC-p 1:50-200, ELISA 1:10000-20000. IF 1:50-200
Concentration	1 mg/ml
Purity	≥90%
Storage Stability	-20°C/1 year
Synonyms	Platelet-derived growth factor C (PDGF-C;Fallotein;Spinal cord-derived growth factor;SCDGF;VEGF-E) [Cleaved into: Platelet-derived growth factor C, latent form (PDGFC latent form); Platelet-derived growth factor C, receptor-binding form (PDGFC receptor-binding form)]
Observed Band	
Cell Pathway	Cytoplasm, cytosol . Secreted . Nucleus . Cytoplasmic granule . Cell membrane . Sumoylated form is predominant in the nucleus (PubMed:15247255). Stored in alpha granules in platelets (PubMed:15061151). .
Tissue Specificity	Expressed in the fallopian tube, vascular smooth muscle cells in kidney, breast and colon and in visceral smooth muscle of the gastrointestinal tract. Highly expressed in retinal pigment epithelia. Expressed in medulloblastoma. In the kidney, constitutively expressed in parietal epithelial cells of Bowman's capsule, tubular epithelial cells and in arterial endothelial cells (at protein level). Highly expressed in the platelets, prostate, testis and uterus. Higher expression is observed in uterine leiomyomata. Weaker expression in the spleen, thymus, heart, pancreas, liver, ovary cells and small intestine, and negligible expression in

Nanjing BYabscience technology Co.,Ltd



the colon and peripheral blood leukocytes.

Function

developmental stage:In the fetal kidney, detected in the developing mesangium, ureteric bud epithelium and the undifferentiated mesenchyme (at protein level).,disease:Downstream target of EWSR1 fusion proteins, contributing to the Ewin family tumors (EFT) malignant phenotype.,disease:Expression increased in patients with uterine leiomyoma (UL).,disease:Predominant PDGF isoform present in patients with proliferative vitreoretinopathy (PVR). Plasmin is the major protease that processes PDGFC in the vitreous of PVR patients.,disease:The medulloblastoma phenotype is associated with PDGFR alpha expression and activation, with PDGFC as a major player in such endogenous autocrine loop.,function:Potent mitogen and chemoattractant for cells of mesenchymal origin. Binding of this growth factor to its affinity receptor elicits a variety of cellular responses. Appears to be involved in the three sta

Background

platelet derived growth factor C(PDGFC) Homo sapiens The protein encoded by this gene is a member of the platelet-derived growth factor family. The four members of this family are mitogenic factors for cells of mesenchymal origin and are characterized by a core motif of eight cysteines. This gene product appears to form only homodimers. It differs from the platelet-derived growth factor alpha and beta polypeptides in having an unusual N-terminal domain, the CUB domain. Alternatively spliced transcript variants have been found for this gene. [provided by RefSeq, Sep 2010],

matters needing attention

Avoid repeated freezing and thawing!

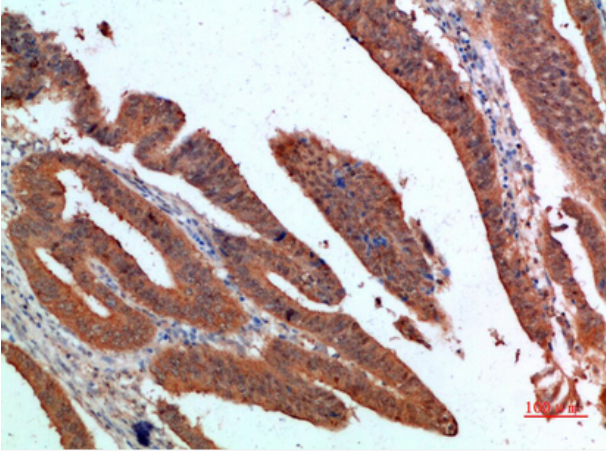
Usage suggestions

This product can be used in immunological reaction related experiments. For more information, please consult technical personnel.

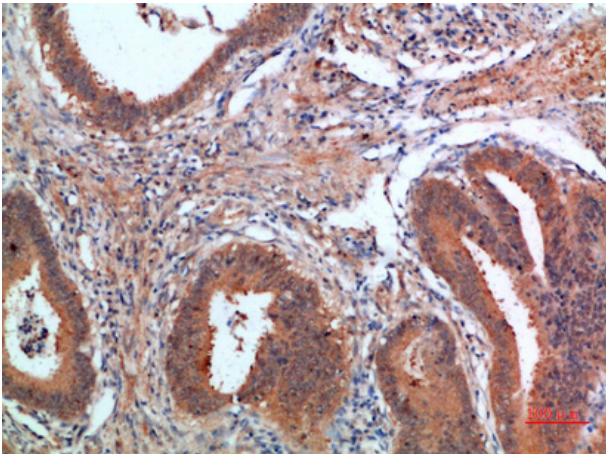
Nanjing BYabscience technology Co.,Ltd



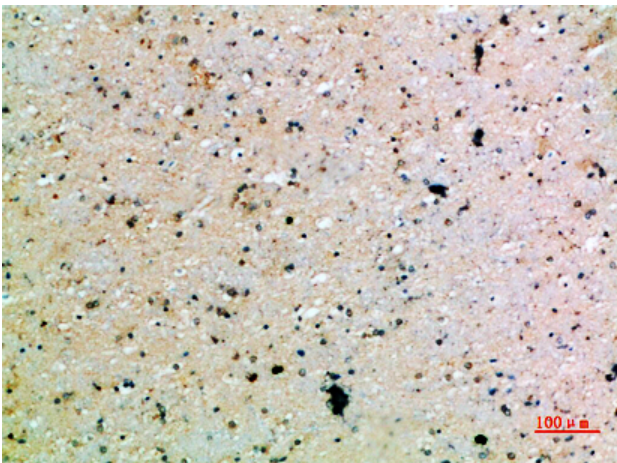
Products Images



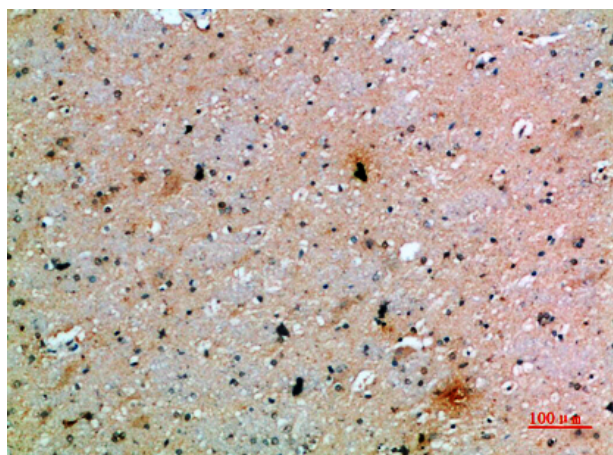
Immunohistochemical analysis of paraffin-embedded human-colon-cancer, antibody was diluted at 1:200



Immunohistochemical analysis of paraffin-embedded human-colon-cancer, antibody was diluted at 1:200



Immunohistochemical analysis of paraffin-embedded human-brain, antibody was diluted at 1:200



Immunohistochemical analysis of paraffin-embedded human-brain, antibody was diluted at 1:200