



6CKine Polyclonal Antibody

Catalog No	BYab-10699
Isotype	IgG
Reactivity	Human;Rat;Mouse;
Applications	IHC;IF;ELISA
Gene Name	CCL21 SCYA21 UNQ784/PRO1600
Protein Name	C-C motif chemokine 21 (6Ckine) (Beta-chemokine exodus-2) (Secondary lymphoid-tissue chemokine) (SLC) (Small-inducible cytokine A21)
Immunogen	The antiserum was produced against synthesized peptide derived from the Internal region of human CCL21. AA range:71-120
Specificity	The antibody detects endogenous 6CKine
Formulation	Liquid in PBS containing 50% glycerol, 0.5% BSA and 0.02% sodium azide.
Source	Polyclonal, Rabbit,IgG
Purification	The antibody was affinity-purified from rabbit antiserum by affinity-chromatography using epitope-specific immunogen.
Dilution	IHC-p 1:50-200, ELISA 1:10000-20000. IF 1:50-200
Concentration	1 mg/ml
Purity	≥90%
Storage Stability	-20°C/1 year
Synonyms	C-C motif chemokine 21 (6Ckine;Beta-chemokine exodus-2;Secondary lymphoid-tissue chemokine;SLC;Small-inducible cytokine A21)
Observed Band	
Cell Pathway	Secreted.
Tissue Specificity	Highly expressed in high endothelial venules of lymph nodes, spleen and appendix. Intermediate levels found in small intestine, thyroid gland and trachea. Low level expression in thymus, bone marrow, liver, and pancreas. Also found in tonsil, fetal heart and fetal spleen.
Function	function:Inhibits hemopoiesis and stimulates chemotaxis. Chemotactic in vitro for thymocytes and activated T-cells, but not for B-cells, macrophages, or neutrophils. Shows preferential activity towards naive T-cells. May play a role in mediating homing of lymphocytes to secondary lymphoid organs.,online information:CCL21 entry,similarity:Belongs to the intercrine beta (chemokine CC) family.,subunit:Binds to CCR7.,tissue specificity:Highly expressed in high endothelial venules of lymph nodes, spleen and appendix. Intermediate levels found in small intestine, thyroid gland and trachea. Low level expression in

Nanjing BYabscience technology Co.,Ltd



thymus, bone marrow, liver, and pancreas. Also found in tonsil, fetal heart and fetal spleen.,

Background

This antimicrobial gene is one of several CC cytokine genes clustered on the p-arm of chromosome 9. Cytokines are a family of secreted proteins involved in immunoregulatory and inflammatory processes. The CC cytokines are proteins characterized by two adjacent cysteines. Similar to other chemokines the protein encoded by this gene inhibits hemopoiesis and stimulates chemotaxis. This protein is chemotactic in vitro for thymocytes and activated T cells, but not for B cells, macrophages, or neutrophils. The cytokine encoded by this gene may also play a role in mediating homing of lymphocytes to secondary lymphoid organs. It is a high affinity functional ligand for chemokine receptor 7 that is expressed on T and B lymphocytes and a known receptor for another member of the cytokine family (small inducible cytokine A19). [provided by RefSeq, Sep 2014],

matters needing attention

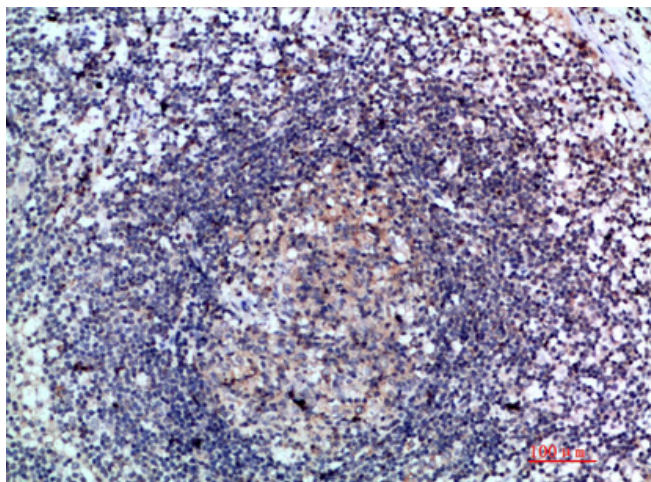
Avoid repeated freezing and thawing!

Usage suggestions

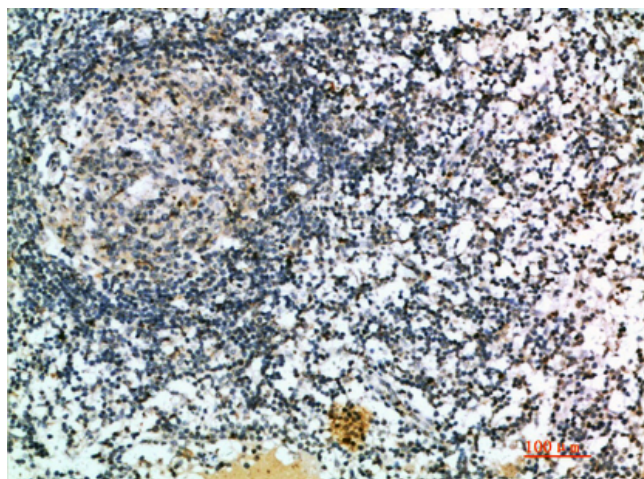
This product can be used in immunological reaction related experiments. For more information, please consult technical personnel.



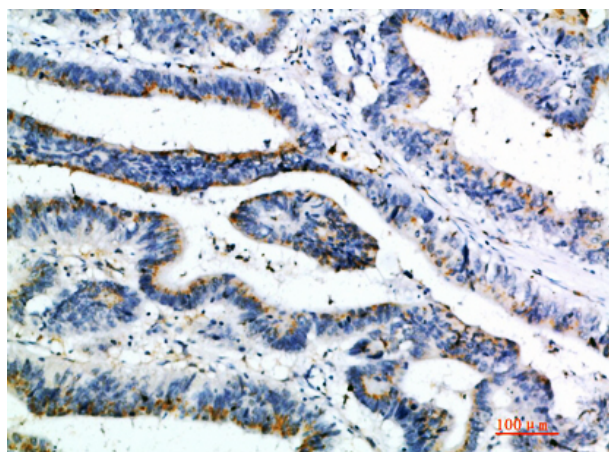
Products Images



Immunohistochemical analysis of paraffin-embedded human-lymph, antibody was diluted at 1:200



Immunohistochemical analysis of paraffin-embedded human-lymph, antibody was diluted at 1:200



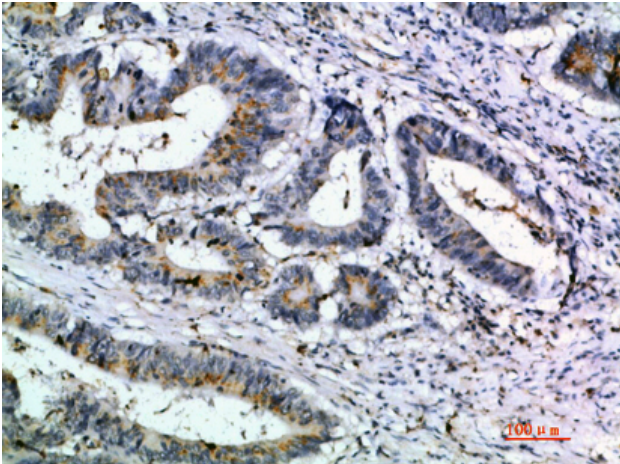
Immunohistochemical analysis of paraffin-embedded human-colon-cancer, antibody was diluted at 1:200

Nanjing BYabscience technology Co.,Ltd

网址: www.njbybio.com

官方热线: 025-5229-8998

监督电话: 15950492658



Immunohistochemical analysis of paraffin-embedded human-colon-cancer, antibody was diluted at 1:200