



HDGF Polyclonal Antibody

Catalog No	BYab-10700
Isotype	IgG
Reactivity	Human;Rat;Mouse;
Applications	IHC;IF;ELISA
Gene Name	HDGF HMG1L2
Protein Name	Hepatoma-derived growth factor (HDGF) (High mobility group protein 1-like 2) (HMG-1L2)
Immunogen	Synthetic peptide from human protein at AA range: 141-190
Specificity	The antibody detects endogenous HDGF
Formulation	Liquid in PBS containing 50% glycerol, 0.5% BSA and 0.02% sodium azide.
Source	Polyclonal, Rabbit,IgG
Purification	The antibody was affinity-purified from rabbit antiserum by affinity-chromatography using epitope-specific immunogen.
Dilution	IHC-p 1:50-200, ELISA 1:10000-20000. IF 1:50-200
Concentration	1 mg/ml
Purity	≥90%
Storage Stability	-20°C/1 year
Synonyms	Hepatoma-derived growth factor (HDGF;High mobility group protein 1-like 2;HMG-1L2)
Observed Band	
Cell Pathway	[Isoform 1]: Nucleus . Cytoplasm . Secreted, extracellular exosome . Secreted by exosomes and is located inside the exosome (PubMed:27926477). May also be secreted as free protein via an as yet unknown pathway (PubMed:27926477). . ; [Isoform 2]: Nucleus . Cytoplasm . Secreted, extracellular exosome . Secreted by exosomes and is located on the outer exosome surface. . ; [Isoform 3]: Nucleus . Cytoplasm . Secreted, extracellular exosome . Secreted by exosomes and is located on the outer exosome surface. .
Tissue Specificity	Ubiquitous.
Function	domain:The PWWP domain harbors the heparin-binding sites and is responsible for DNA-binding, while the C-terminal region is essentially unstructured.,function:Heparin-binding protein, with mitogenic activity for fibroblasts. Acts as a transcriptional repressor.,PTM:Sumoylated by SUMO1. Sumoylation prevents binding to chromatin.,similarity:Belongs to the HDGF family.,similarity:Contains 1 PWWP domain.,subunit:Monomer, and

Nanjing BYabs science technology Co.,Ltd



domain-swapped homodimer.,tissue specificity:Ubiquitous.,

Background

This gene encodes a member of the hepatoma-derived growth factor family. The encoded protein has mitogenic and DNA-binding activity and may play a role in cellular proliferation and differentiation. High levels of expression of this gene enhance the growth of many tumors. This gene was thought initially to be located on chromosome X; however, that location has been determined to correspond to a related pseudogene. Alternatively spliced transcript variants encoding distinct isoforms have been described. [provided by RefSeq, Jan 2016],

matters needing attention

Avoid repeated freezing and thawing!

Usage suggestions

This product can be used in immunological reaction related experiments. For more information, please consult technical personnel.

Nanjing BYabscience technology Co.,Ltd

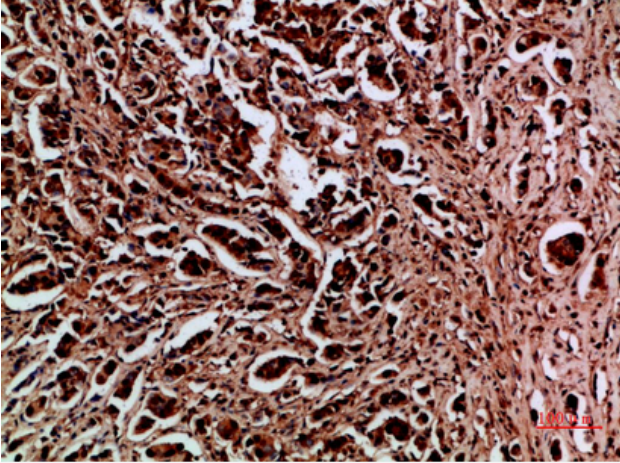
网址: www.njbybio.com

官方热线: 025-5229-8998

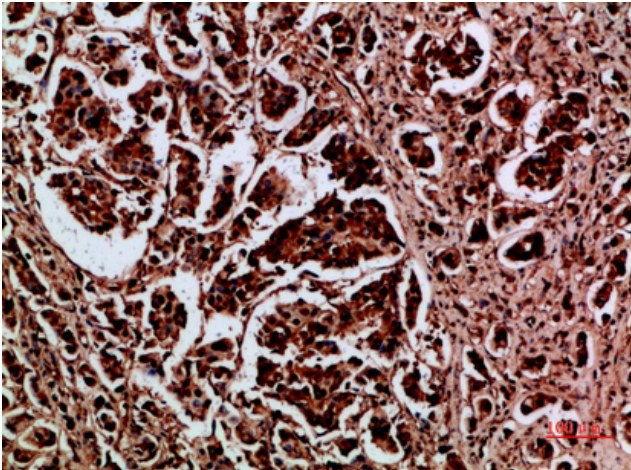
监督电话: 15950492658



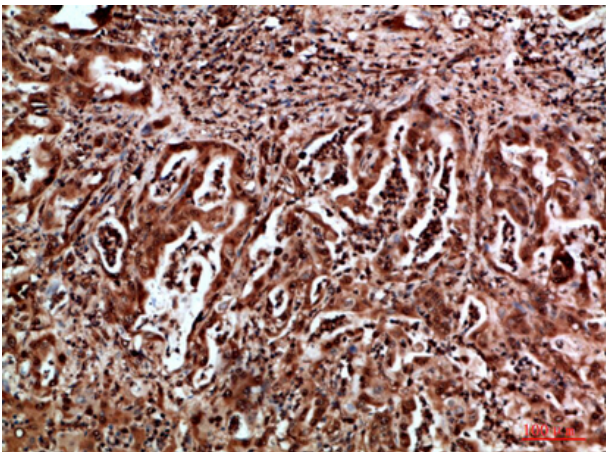
Products Images



Immunohistochemical analysis of paraffin-embedded human-breast-cancer, antibody was diluted at 1:200



Immunohistochemical analysis of paraffin-embedded human-breast-cancer, antibody was diluted at 1:200



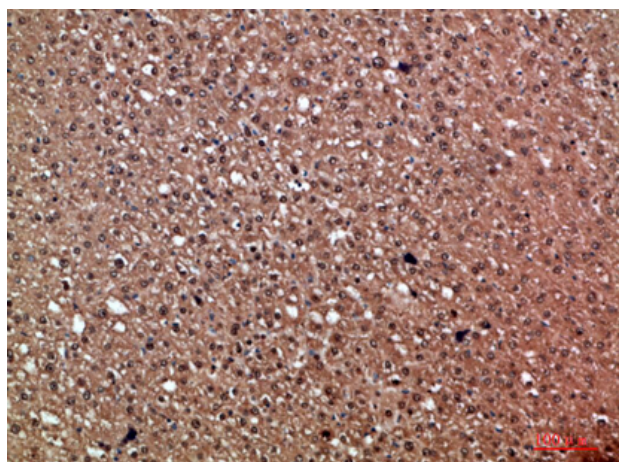
Immunohistochemical analysis of paraffin-embedded human-liver-cancer, antibody was diluted at 1:200

Nanjing BYabs science technology Co.,Ltd

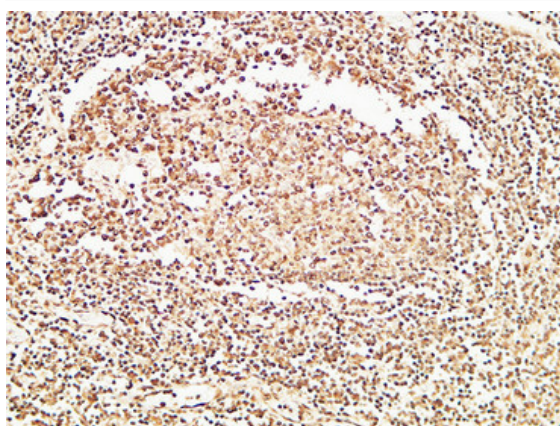
网址: www.njbybio.com

官方热线: 025-5229-8998

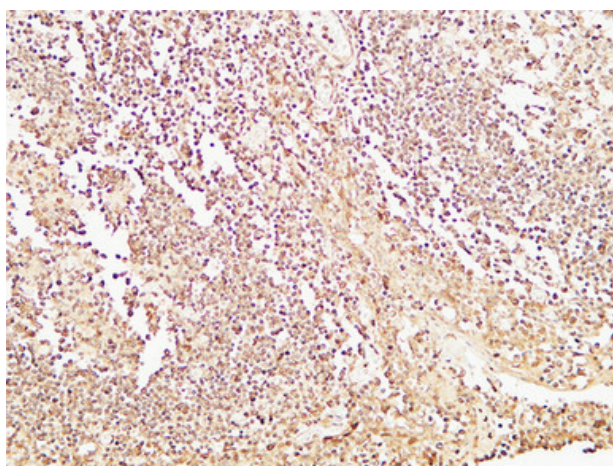
监督电话: 15950492658

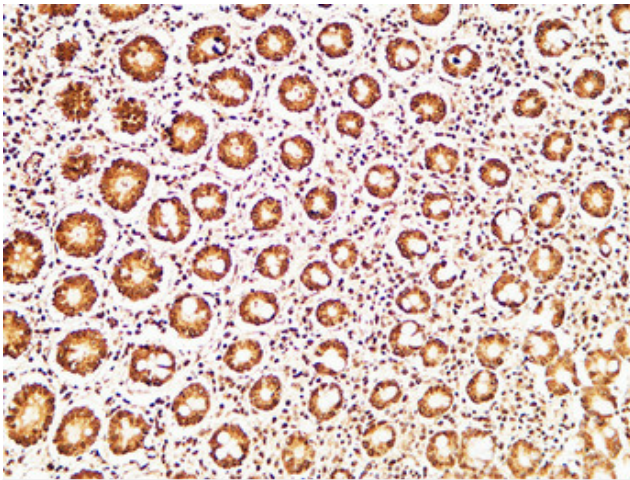
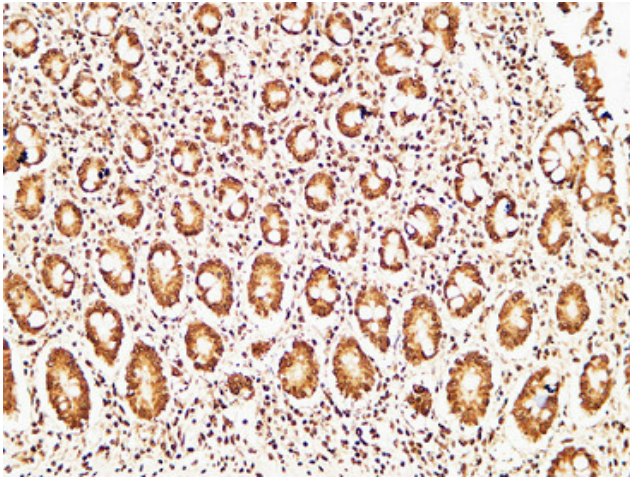
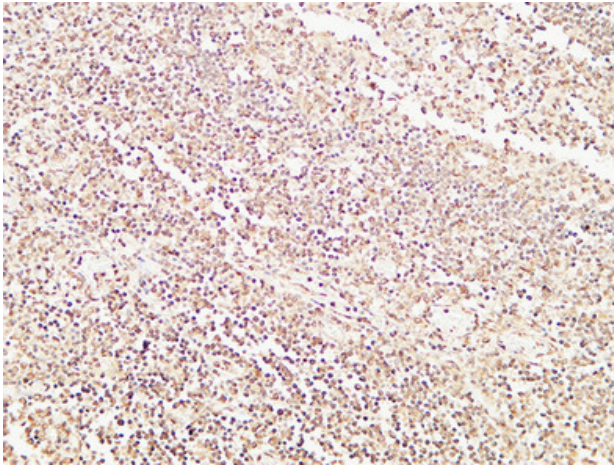


Immunohistochemical analysis of paraffin-embedded human-liver-cancer, antibody was diluted at 1:200



Immunohistochemical analysis of paraffin-embedded Human Amygdala. 1, Antibody was diluted at 1:200(4° overnight). 2, High-pressure and temperature EDTA, pH8.0 was used for antigen retrieval. 3, Secondary antibody was diluted at 1:200(room temperature, 30min).



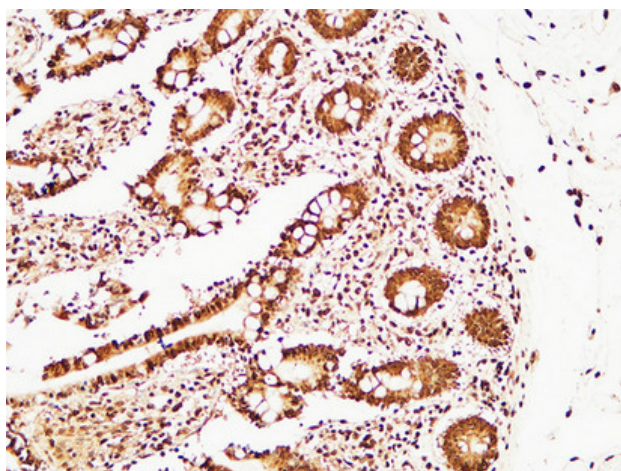


Nanjing BYabscience technology Co.,Ltd

网址: www.njbybio.com

官方热线: 025-5229-8998

监督电话: 15950492658



Nanjing BYabs science technology Co.,Ltd

网址: www.njbybio.com

官方热线: 025-5229-8998

监督电话: 15950492658