



IL-17B Polyclonal Antibody

Catalog No	BYab-10702
Isotype	IgG
Reactivity	Human;Rat
Applications	IHC;IF;ELISA
Gene Name	IL17B IL20 NIRF ZCYTO7 UNQ516/PRO1031
Protein Name	Interleukin-17B (IL-17B) (Cytokine Zcyto7) (Interleukin-20) (IL-20) (Neuronal interleukin-17-related factor)
Immunogen	Synthetic peptide from human protein at AA range: 1-50
Specificity	The antibody detects endogenous IL-17B
Formulation	Liquid in PBS containing 50% glycerol, 0.5% BSA and 0.02% sodium azide.
Source	Polyclonal, Rabbit,IgG
Purification	The antibody was affinity-purified from rabbit antiserum by affinity-chromatography using epitope-specific immunogen.
Dilution	IHC-p 1:50-200, ELISA 1:10000-20000. IF 1:50-200
Concentration	1 mg/ml
Purity	≥90%
Storage Stability	-20°C/1 year
Synonyms	Interleukin-17B (IL-17B;Cytokine Zcyto7;Interleukin-20;IL-20;Neuronal interleukin-17-related factor)
Observed Band	
Cell Pathway	Secreted.
Tissue Specificity	Expressed in adult pancreas, small intestine, stomach, spinal cord and testis. Less pronounced expression in prostate, colon mucosal lining, and ovary.
Function	function:Stimulates the release of tumor necrosis factor alpha and IL-1-beta from the monocytic cell line THP-1.,online information:Interleukin-17 entry,similarity:Belongs to the IL-17 family.,tissue specificity:Expressed in adult pancreas, small intestine, stomach, spinal cord and testis. Less pronounced expression in prostate, colon mucosal lining, and ovary.,
Background	The protein encoded by this gene is a T cell-derived cytokine that shares sequence similarity with IL17. This cytokine was reported to stimulate the release of TNF alpha (TNF) and IL1 beta (IL1B) from a monocytic cell line. Immunohistochemical analysis of several nerve tissues indicated that this cytokine is primarily localized to neuronal cell bodies. Alternative splicing results in

Nanjing BYabscience technology Co.,Ltd



multiple splice variants. [provided by RefSeq, Dec 2015],

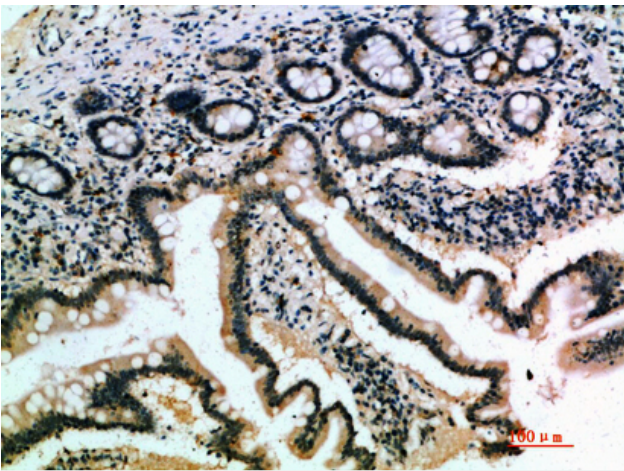
matters needing attention

Avoid repeated freezing and thawing!

Usage suggestions

This product can be used in immunological reaction related experiments. For more information, please consult technical personnel.

Products Images



Immunohistochemical analysis of paraffin-embedded human-small-intestine, antibody was diluted at 1:200

Nanjing BYabscience technology Co.,Ltd

网址: www.njbybio.com

官方热线: 025-5229-8998

监督电话: 15950492658