



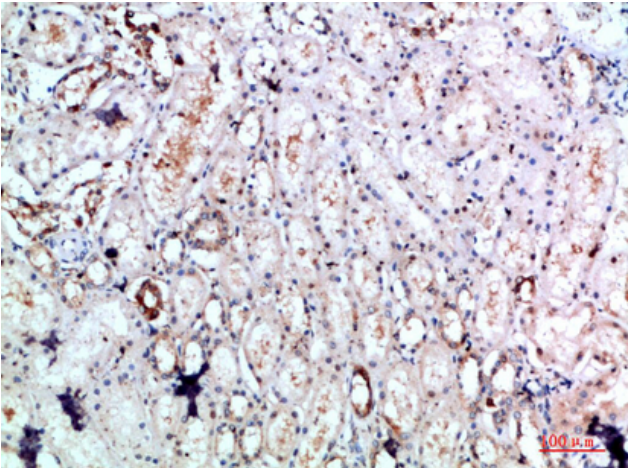
DLEU7 Polyclonal Antibody

Catalog No	BYab-10711
Isotype	IgG
Reactivity	Human;Rat;Mouse;
Applications	IHC;IF;ELISA
Gene Name	DLEU7 LEU7
Protein Name	Leukemia-associated protein 7 (Deleted in lymphocytic leukemia 7)
Immunogen	The antiserum was produced against synthesized peptide derived from the Internal region of human DLEU7. AA range:51-100
Specificity	The antibody detects endogenous DLEU7
Formulation	Liquid in PBS containing 50% glycerol, 0.5% BSA and 0.02% sodium azide.
Source	Polyclonal, Rabbit,IgG
Purification	The antibody was affinity-purified from rabbit antiserum by affinity-chromatography using epitope-specific immunogen.
Dilution	IHC-p 1:50-200, ELISA 1:10000-20000. IF 1:50-200
Concentration	1 mg/ml
Purity	≥90%
Storage Stability	-20°C/1 year
Synonyms	Leukemia-associated protein 7 (Deleted in lymphocytic leukemia 7)
Observed Band	
Cell Pathway	
Tissue Specificity	Ubiquitous.
Function	alternative products:Additional isoforms seem to exist,developmental stage:Expressed in the fetal brain, liver and kidney.,tissue specificity:Ubiquitous.,
Background	alternative products:Additional isoforms seem to exist,developmental stage:Expressed in the fetal brain, liver and kidney.,tissue specificity:Ubiquitous.,
matters needing attention	Avoid repeated freezing and thawing!
Usage suggestions	This product can be used in immunological reaction related experiments. For more information, please consult technical personnel.

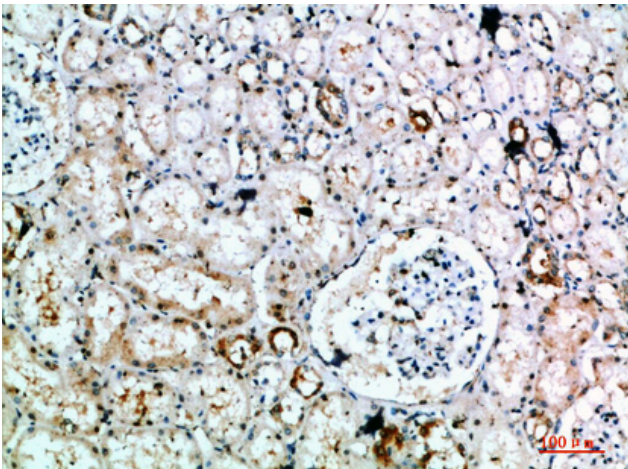
Nanjing BYabscience technology Co.,Ltd



Products Images



Immunohistochemical analysis of paraffin-embedded human-kidney, antibody was diluted at 1:200



Immunohistochemical analysis of paraffin-embedded human-kidney, antibody was diluted at 1:200