



CD52 Polyclonal Antibody

Catalog No	BYab-10735
Isotype	IgG
Reactivity	Human;Rat;Mouse;
Applications	IHC;IF;ELISA
Gene Name	CD52 CDW52 HE5
Protein Name	CAMPATH-1 antigen (CDw52) (Cambridge pathology 1 antigen) (Epididymal secretory protein E5) (Human epididymis-specific protein 5) (He5) (CD antigen CD52)
Immunogen	Synthetic peptide from human protein at AA range: 20-50
Specificity	The antibody detects endogenous CD52
Formulation	Liquid in PBS containing 50% glycerol, 0.5% BSA and 0.02% sodium azide.
Source	Polyclonal, Rabbit,IgG
Purification	The antibody was affinity-purified from rabbit antiserum by affinity-chromatography using epitope-specific immunogen.
Dilution	IHC-p 1:50-200, ELISA 1:10000-20000. IF 1:50-200
Concentration	1 mg/ml
Purity	≥90%
Storage Stability	-20°C/1 year
Synonyms	CAMPATH-1 antigen (CDw52;Cambridge pathology 1 antigen;Epididymal secretory protein E5;Human epididymis-specific protein 5;He5;CD antigen CD52)
Observed Band	15-20kD
Cell Pathway	Cell membrane; Lipid-anchor, GPI-anchor.
Tissue Specificity	Epididymis,Lymph,Spleen,
Function	function:May play a role in carrying and orienting carbohydrate, as well as having a more specific role.,
Background	function:May play a role in carrying and orienting carbohydrate, as well as having a more specific role.,
matters needing attention	Avoid repeated freezing and thawing!

Nanjing BYabscience technology Co.,Ltd

网址: www.njbybio.com

官方热线: 025-5229-8998

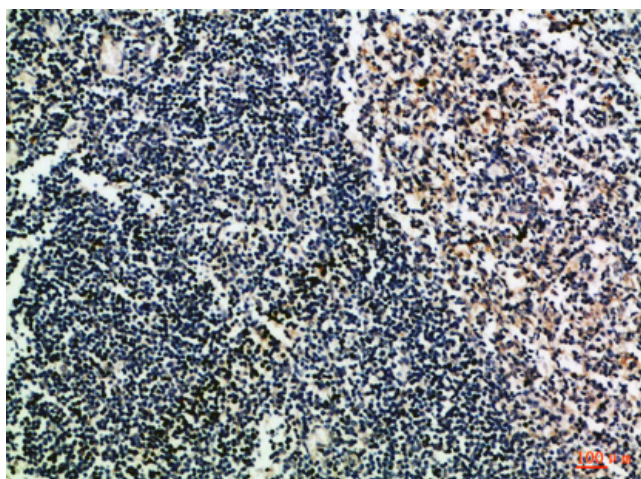
监督电话: 15950492658



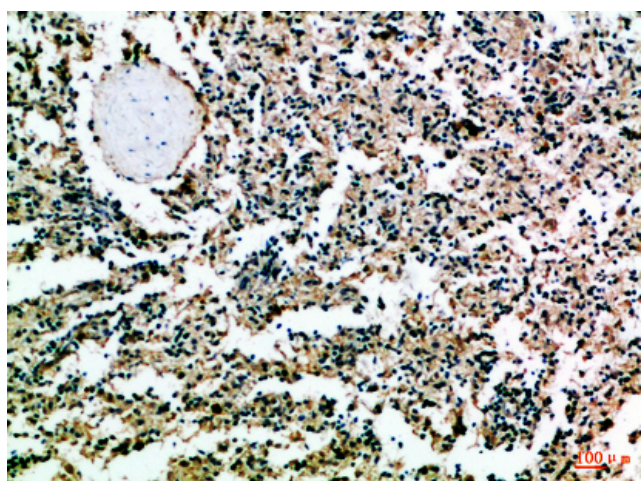
Usage suggestions

This product can be used in immunological reaction related experiments. For more information, please consult technical personnel.

Products Images



Immunohistochemical analysis of paraffin-embedded Human-tonsil, antibody was diluted at 1:100



Immunohistochemical analysis of paraffin-embedded Human-spleen, antibody was diluted at 1:100