



# AVPR1A Polyclonal Antibody

<b>Catalog No</b>	BYab-10778
<b>Isotype</b>	IgG
<b>Reactivity</b>	Human;Mouse
<b>Applications</b>	WB;ELISA
<b>Gene Name</b>	AVPR1A
<b>Protein Name</b>	AVPR1A
<b>Immunogen</b>	Synthesized peptide derived from human AVPR1A. at AA range: 11-60
<b>Specificity</b>	AVPR1A Polyclonal Antibody detects endogenous levels of AVPR1A
<b>Formulation</b>	Liquid in PBS containing 50% glycerol, 0.5% BSA and 0.02% sodium azide.
<b>Source</b>	Polyclonal, Rabbit,IgG
<b>Purification</b>	The antibody was affinity-purified from rabbit antiserum by affinity-chromatography using epitope-specific immunogen.
<b>Dilution</b>	WB 1:500-2000, ELISA 1:10000-20000
<b>Concentration</b>	1 mg/ml
<b>Purity</b>	≥90%
<b>Storage Stability</b>	-20°C/1 year
<b>Synonyms</b>	Vasopressin V1a receptor (V1aR) (AVPR V1a) (Antidiuretic hormone receptor 1a) (Vascular/hepatic-type arginine vasopressin receptor)
<b>Observed Band</b>	55kD
<b>Cell Pathway</b>	Cell membrane; Multi-pass membrane protein.
<b>Tissue Specificity</b>	Liver,Lung,
<b>Function</b>	function:Receptor for arginine vasopressin. The activity of this receptor is mediated by G proteins which activate a phosphatidyl-inositol-calcium second messenger system. Has been involved in social behaviors, including affiliation and attachment.,miscellaneous:Differences in regional receptor expression in the brain as well as differences in social behavior may result from a highly variable repetitive sequence in the 5' flanking region of AVPR1A. One such allelic variant has been linked to autism.,similarity:Belongs to the G-protein coupled receptor 1 family.,
<b>Background</b>	The protein encoded by this gene acts as receptor for arginine vasopressin. This receptor belongs to the subfamily of G-protein coupled receptors which includes

**Nanjing BYabs science technology Co.,Ltd**



AVPR1B, V2R and OXT receptors. Its activity is mediated by G proteins which stimulate a phosphatidylinositol-calcium second messenger system. The receptor mediates cell contraction and proliferation, platelet aggregation, release of coagulation factor and glycogenolysis. [provided by RefSeq, Jul 2008],

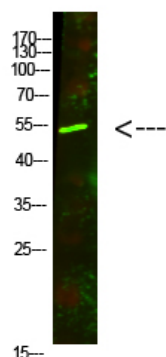
**matters needing attention**

Avoid repeated freezing and thawing!

**Usage suggestions**

This product can be used in immunological reaction related experiments. For more information, please consult technical personnel.

## Products Images



Western Blot analysis of mouse-lung cells using primary antibody diluted at 1:500(4°C overnight).  
Secondary antibody:Goat Anti-rabbit IgG IRDye 800(diluted at 1:5000, 25°C, 1 hour)

Nanjing BYabscience technology Co.,Ltd

网址: [www.njbybio.com](http://www.njbybio.com)

官方热线: 025-5229-8998

监督电话: 15950492658