



DFFB Polyclonal Antibody

Catalog No	BYab-10838
Isotype	IgG
Reactivity	Human;Rat;Mouse;
Applications	IHC;IF;WB
Gene Name	DFFB CAD DFF2 DFF40
Protein Name	DFFB
Immunogen	Synthesized peptide derived from human DFFB
Specificity	This antibody detects endogenous levels of human DFFB
Formulation	Liquid in PBS containing 50% glycerol, 0.5% BSA and 0.02% sodium azide.
Source	Polyclonal, Rabbit,IgG
Purification	The antibody was affinity-purified from rabbit serum by affinity-chromatography using specific immunogen.
Dilution	IHC-p 1:50-200, WB 1:500-2000. IF 1:50-200
Concentration	1 mg/ml
Purity	≥90%
Storage Stability	-20°C/1 year
Synonyms	DNA fragmentation factor subunit beta (EC 3.-.-.;Caspase-activated deoxyribonuclease;CAD;Caspase-activated DNase;Caspase-activated nuclease;CPAN;DNA fragmentation factor 40 kDa subunit;DFF-40)
Observed Band	37kD
Cell Pathway	Cytoplasm. Nucleus.
Tissue Specificity	Brain,Fetal brain,Lung,Pancreas,
Function	enzyme regulation:Inhibited by DFFA (DFF45).,function:Nuclease that induces DNA fragmentation and chromatin condensation during apoptosis. Degrades naked DNA and induces apoptotic morphology.,similarity:Contains 1 CIDE-N domain.,subunit:Heterodimer of DFFA and DFFB.,
Background	Apoptosis is a cell death process that removes toxic and/or useless cells during mammalian development. The apoptotic process is accompanied by shrinkage and fragmentation of the cells and nuclei and degradation of the chromosomal DNA into nucleosomal units. DNA fragmentation factor (DFF) is a heterodimeric protein of 40-kD (DFFB) and 45-kD (DFFA) subunits. DFFA is the substrate for

Nanjing BYabscience technology Co.,Ltd



caspase-3 and triggers DNA fragmentation during apoptosis. DFF becomes activated when DFFA is cleaved by caspase-3. The cleaved fragments of DFFA dissociate from DFFB, the active component of DFF. DFFB has been found to trigger both DNA fragmentation and chromatin condensation during apoptosis. Alternatively spliced transcript variants encoding distinct isoforms have been found for this gene but the biological validity of some of these variants has not been determined. [provided by RefSeq, Sep 2013],

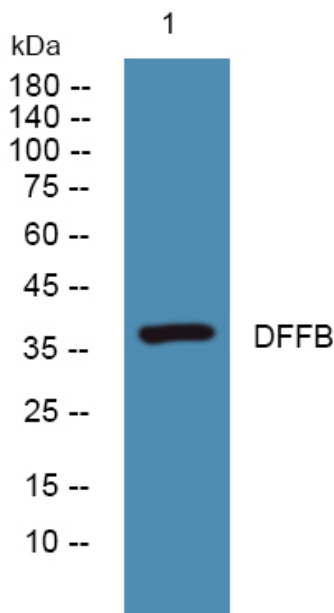
matters needing attention

Avoid repeated freezing and thawing!

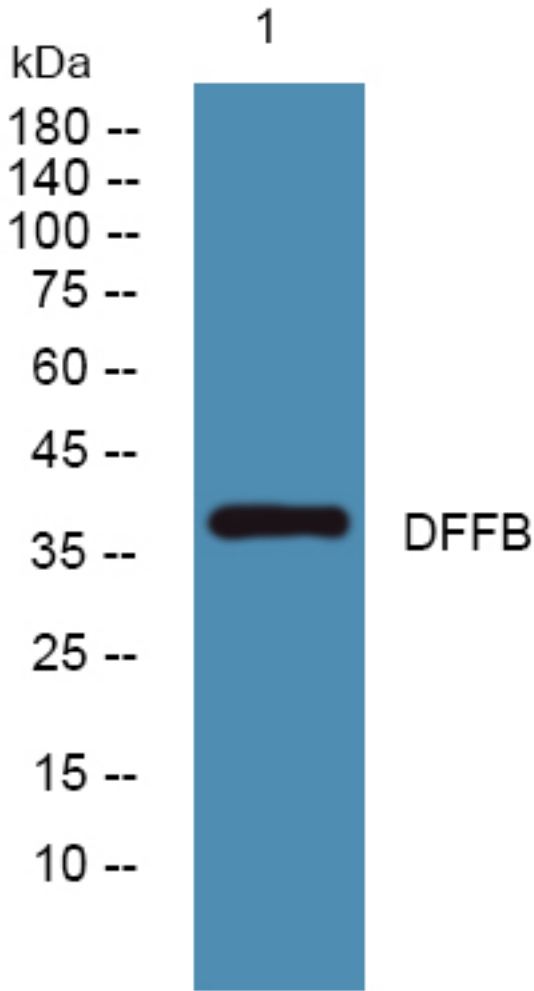
Usage suggestions

This product can be used in immunological reaction related experiments. For more information, please consult technical personnel.

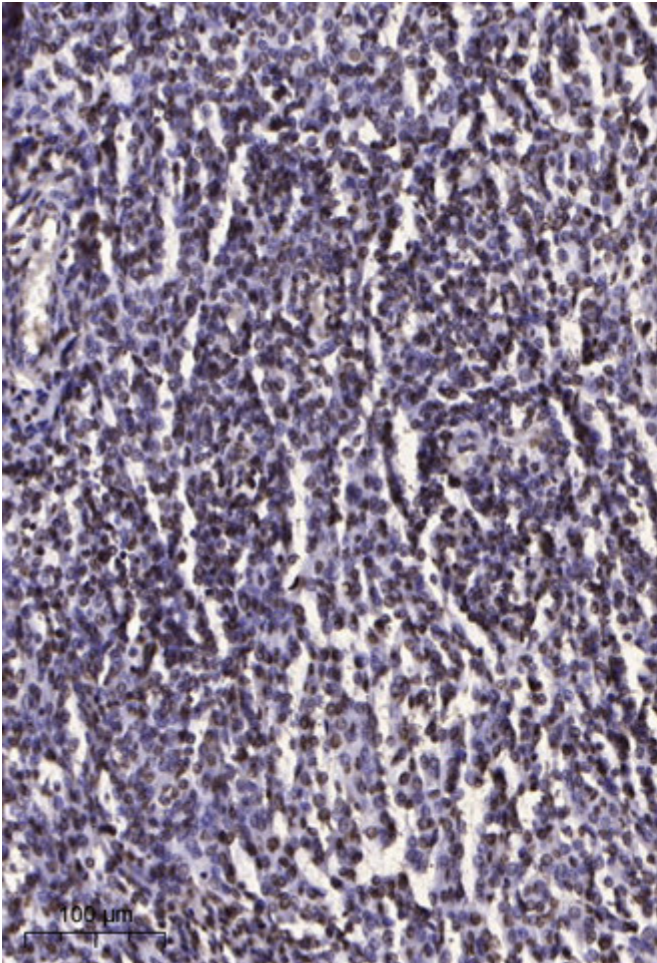
Products Images



Western blot analysis of lysates from KB cells, primary antibody was diluted at 1:1000, 4° over night



Western blot analysis of lysates from DU145 cells,
primary antibody was diluted at 1:1000, 4° over night



Immunohistochemical analysis of paraffin-embedded human brain tumor. 1, Antibody was diluted at 1:200(4° overnight). 2, Tris-EDTA,pH9.0 was used for antigen retrieval. 3,Secondary antibody was diluted at 1:200(room temperature, 45min).