



TRY2 Polyclonal Antibody

Catalog No	BYab-10840
Isotype	IgG
Reactivity	Human;Rat;Mouse;
Applications	IHC;IF;WB
Gene Name	PRSS2 TRY2 TRYP2
Protein Name	TRY2
Immunogen	Synthesized peptide derived from human TRY2
Specificity	This antibody detects endogenous levels of human TRY2
Formulation	Liquid in PBS containing 50% glycerol, 0.5% BSA and 0.02% sodium azide.
Source	Polyclonal, Rabbit,IgG
Purification	The antibody was affinity-purified from rabbit serum by affinity-chromatography using specific immunogen.
Dilution	IHC-p 1:50-200, WB 1:500-2000. IF 1:50-200
Concentration	1 mg/ml
Purity	≥90%
Storage Stability	-20°C/1 year
Synonyms	Trypsin-2 (EC 3.4.21.4;Anionic trypsinogen;Serine protease 2;Trypsin II)
Observed Band	27kD
Cell Pathway	Secreted, extracellular space.
Tissue Specificity	Expressed in Paneth cells, at the base of small intestinal crypts.
Function	catalytic activity:Preferential cleavage: Arg- -Xaa, Lys- -Xaa.,cofactor:Binds 1 calcium ion per subunit.,PTM:Sulfated on tyrosine.,similarity:Belongs to the peptidase S1 family.,similarity:Contains 1 peptidase S1 domain.,
Background	This gene belongs to the trypsin family of serine proteases and encodes anionic trypsinogen. It is part of a cluster of trypsinogen genes that are located within the T cell receptor beta locus. Enzymes of this family cleave peptide bonds that follow lysine or arginine residues. This protein is found at high levels in pancreatic juice and its upregulation is a characteristic feature of pancreatitis. This protein has also been found to activate pro-urokinase in ovarian tumors, suggesting a function in tumor invasion. In addition, this enzyme is able to cleave across the type II collagen triple helix in rheumatoid arthritis synovitis tissue, potentially participating

Nanjing BYabscience technology Co.,Ltd



in the degradation of type II collagen-rich cartilage matrix. Alternative splicing results in multiple transcript variants.[provided by RefSeq, Jan 2015],

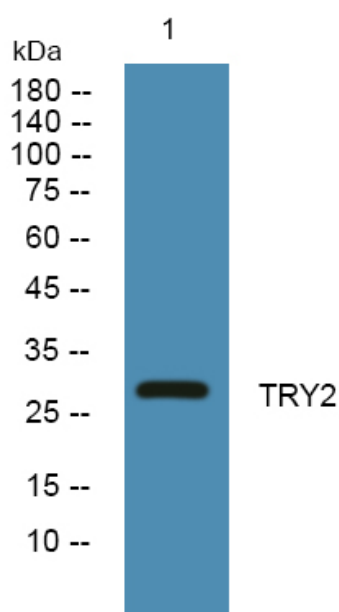
matters needing attention

Avoid repeated freezing and thawing!

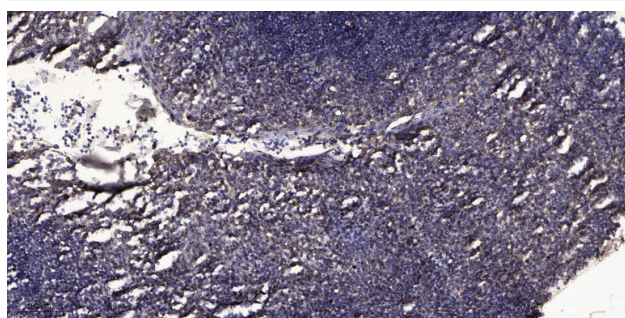
Usage suggestions

This product can be used in immunological reaction related experiments. For more information, please consult technical personnel.

Products Images



Western blot analysis of lysates from Jarkat cells, primary antibody was diluted at 1:1000, 4° over night



Immunohistochemical analysis of paraffin-embedded human tonsil. 1, Antibody was diluted at 1:200(4° overnight). 2, Tris-EDTA, pH9.0 was used for antigen retrieval. 3, Secondary antibody was diluted at 1:200(room temperature, 30min).

Nanjing BYabs science technology Co.,Ltd

网址: www.njbybio.com

官方热线: 025-5229-8998

监督电话: 15950492658