



Secretogranin-1 Polyclonal Antibody

Catalog No	BYab-10846
Isotype	IgG
Reactivity	Human; Mouse; Rat
Applications	IHC;IF;WB
Gene Name	CHGB SCG1
Protein Name	Secretogranin-1
Immunogen	Synthesized peptide derived from human Secretogranin-1
Specificity	This antibody detects endogenous levels of human Secretogranin-1
Formulation	Liquid in PBS containing 50% glycerol, 0.5% BSA and 0.02% sodium azide.
Source	Polyclonal, Rabbit,IgG
Purification	The antibody was affinity-purified from rabbit serum by affinity-chromatography using specific immunogen.
Dilution	IHC-p 1:50-200, WB 1:500-2000. IF 1:50-200
Concentration	1 mg/ml
Purity	≥90%
Storage Stability	-20°C/1 year
Synonyms	Secretogranin-1 (Chromogranin-B;CgB;Secretogranin I;Sgl) [Cleaved into: GAWK peptide; CCB peptide]
Observed Band	78kD
Cell Pathway	Secreted. Neuroendocrine and endocrine secretory granules.
Tissue Specificity	Expressed in the adrenal medulla, and in pheochromocytoma. Not expressed in liver.
Function	function:Secretogranin-1 is a neuroendocrine secretory granule protein, which may be the precursor for other biologically active peptides.,PTM:Extensively processed by limited proteolysis at conserved basic residues. Alternative processing are seen in different tissues.,similarity:Belongs to the chromogranin/secretogranin protein family.,subcellular location:Neuroendocrine and endocrine secretory granules.,tissue specificity:Expressed in the adrenal medulla, and in pheochromocytoma. Not expressed in liver.,
Background	This gene encodes a tyrosine-sulfated secretory protein abundant in peptidergic endocrine cells and neurons. This protein may serve as a precursor for regulatory peptides. [provided by RefSeq, Jan 2009],

Nanjing BYabs science technology Co.,Ltd



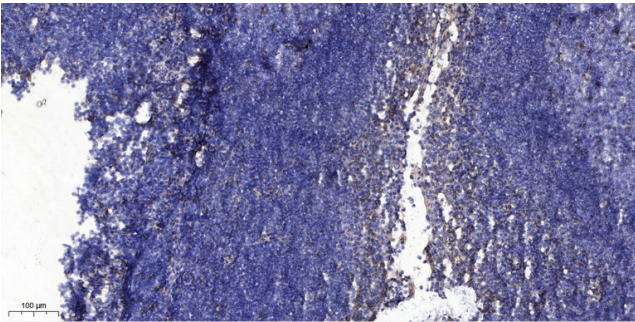
matters needing attention

Avoid repeated freezing and thawing!

Usage suggestions

This product can be used in immunological reaction related experiments. For more information, please consult technical personnel.

Products Images



Immunohistochemical analysis of paraffin-embedded human tonsil. 1, Antibody was diluted at 1:200(4° overnight). 2, Tris-EDTA,pH9.0 was used for antigen retrieval. 3,Secondary antibody was diluted at 1:200(room temperature, 30min).