



CPO Polyclona Antibody

Catalog No	BYab-10888
Isotype	IgG
Reactivity	Human;Rat;Mouse;
Applications	IHC; ELISA
Gene Name	CPO
Protein Name	CPO
Immunogen	Synthesized peptide derived from human CPO AA range: 50-100
Specificity	This antibody detects endogenous levels of human CPO
Formulation	Liquid in PBS containing 50% glycerol, 0.5% BSA and 0.02% sodium azide.
Source	Polyclonal, Rabbit,IgG
Purification	The antibody was affinity-purified from mouse ascites by affinity-chromatography using specific immunogen.
Dilution	IHC-p 1:50-200, ELISA(peptide)1:5000-20000
Concentration	1 mg/ml
Purity	≥90%
Storage Stability	-20°C/1 year
Synonyms	Carboxypeptidase O (CPO;EC 3.4.17.-)
Observed Band	
Cell Pathway	Apical cell membrane ; Lipid-anchor, GPI-anchor .
Tissue Specificity	Detected in enterocytes of the ileum.
Function	cofactor:Binds 1 zinc ion per subunit.,function:Probable carboxypeptidase which may cleave proteins with C-terminal acidic residues.,similarity:Belongs to the peptidase M14 family.,
Background	carboxypeptidase O(CPO) Homo sapiens This gene is a member of the metallocarboxypeptidase gene family. [provided by RefSeq, Jan 2011],
matters needing attention	Avoid repeated freezing and thawing!

Nanjing BYabscience technology Co.,Ltd

网址: www.njbybio.com

官方热线: 025-5229-8998

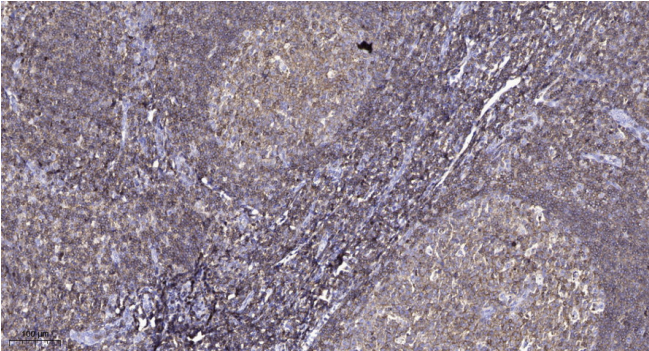
监督电话: 15950492658



Usage suggestions

This product can be used in immunological reaction related experiments. For more information, please consult technical personnel.

Products Images



Immunohistochemical analysis of paraffin-embedded human tonsil. 1, Antibody was diluted at 1:200(4° overnight). 2, Tris-EDTA,pH9.0 was used for antigen retrieval. 3,Secondary antibody was diluted at 1:200(room temperature, 45min).