



TCEAL7 Polyclona Antibody

Catalog No	BYab-10892
Isotype	IgG
Reactivity	Human; Mouse
Applications	WB;IHC;IF;ELISA
Gene Name	TCEAL7
Protein Name	TCEAL7
Immunogen	Synthesized peptide derived from human TCEAL7 AA range: 34-84
Specificity	This antibody detects endogenous levels of human TCEAL7
Formulation	Liquid in PBS containing 50% glycerol, 0.5% BSA and 0.02% sodium azide.
Source	Polyclonal, Rabbit,IgG
Purification	The antibody was affinity-purified from mouse ascites by affinity-chromatography using specific immunogen.
Dilution	Western Blot: 1/500 - 1/2000. Immunohistochemistry: 1/100 - 1/300. Immunofluorescence: 1/200 - 1/1000. ELISA: 1/5000. Not yet tested in other applications.
Concentration	1 mg/ml
Purity	≥90%
Storage Stability	-20°C/1 year
Synonyms	Transcription elongation factor A protein-like 7 (TCEA-like protein 7;Transcription elongation factor S-II protein-like 7)
Observed Band	
Cell Pathway	Nucleus .
Tissue Specificity	Highly expressed in normal and fetal brain tissues, and weakly expressed in uterus and ovary. Down-regulated in epithelial ovarian, cervical, prostate, breast, brain and lung cancer cell lines and in brain and ovarian tumors.
Function	function:May be involved in transcriptional regulation.,similarity:Belongs to the TFS-II family. TFA subfamily.,
Background	function:May be involved in transcriptional regulation.,similarity:Belongs to the TFS-II family. TFA subfamily.,
matters needing attention	Avoid repeated freezing and thawing!

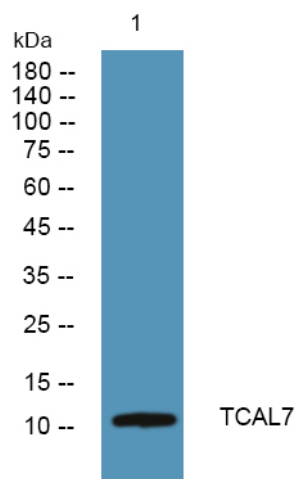
Nanjing BYabscience technology Co.,Ltd



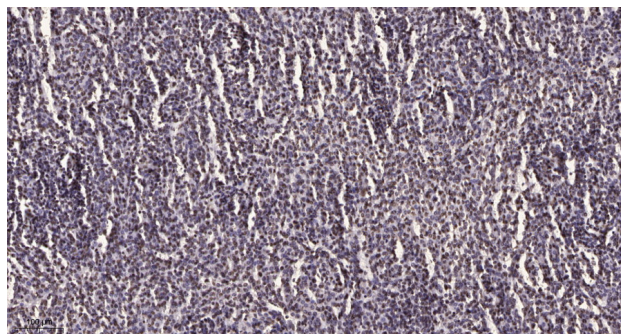
Usage suggestions

This product can be used in immunological reaction related experiments. For more information, please consult technical personnel.

Products Images



Western blot analysis of lysates from SH-SY5Y cells, primary antibody was diluted at 1:1000, 4° over night



Immunohistochemical analysis of paraffin-embedded human brain tumor. 1, Antibody was diluted at 1:200 (4° overnight). 2, Tris-EDTA, pH 9.0 was used for antigen retrieval. 3, Secondary antibody was diluted at 1:200 (room temperature, 45 min).