



# APOC1 Polyclona Antibody

<b>Catalog No</b>	BYab-10900
<b>Isotype</b>	IgG
<b>Reactivity</b>	Human;Rat;Mouse;
<b>Applications</b>	IHC; ELISA
<b>Gene Name</b>	APOC1 APOC1B
<b>Protein Name</b>	APOC1
<b>Immunogen</b>	Synthesized peptide derived from human APOC1 AA range: 1-50
<b>Specificity</b>	This antibody detects endogenous levels of human APOC1
<b>Formulation</b>	Liquid in PBS containing 50% glycerol, 0.5% BSA and 0.02% sodium azide.
<b>Source</b>	Polyclonal, Rabbit,IgG
<b>Purification</b>	The antibody was affinity-purified from mouse ascites by affinity-chromatography using specific immunogen.
<b>Dilution</b>	IHC-p 1:50-200, ELISA(peptide)1:5000-20000
<b>Concentration</b>	1 mg/ml
<b>Purity</b>	≥90%
<b>Storage Stability</b>	-20°C/1 year
<b>Synonyms</b>	Apolipoprotein C-I (Apo-CIB;ApoC-IB;Apolipoprotein C1) [Cleaved into: Truncated apolipoprotein C-I (Apo-CIB';ApoC-IB')]
<b>Observed Band</b>	
<b>Cell Pathway</b>	Secreted .
<b>Tissue Specificity</b>	Synthesized mainly in liver and to a minor degree in intestine. Also found in the lung and spleen.
<b>Function</b>	function:Appears to modulate the interaction of APOE with beta-migrating VLDL and inhibit binding of beta-VLDL to the LDL receptor-related protein.,miscellaneous:Apo-CI makes up about 10% of the protein of the VLDL (very low density lipoprotein) and 2% of that of HDL (high density lipoprotein).,online information:Apolipoprotein C1 entry,similarity:Belongs to the apolipoprotein C1 family.,tissue specificity:Synthesized mainly in liver and to a minor degree in intestine. Secreted in plasma.,
<b>Background</b>	This gene encodes a member of the apolipoprotein C1 family. This gene is expressed primarily in the liver, and it is activated when monocytes differentiate into macrophages. The encoded protein plays a central role in high density

**Nanjing BYabscience technology Co.,Ltd**



lipoprotein (HDL) and very low density lipoprotein (VLDL) metabolism. This protein has also been shown to inhibit cholesteryl ester transfer protein in plasma. A pseudogene of this gene is located 4 kb downstream in the same orientation, on the same chromosome. This gene is mapped to chromosome 19, where it resides within a apolipoprotein gene cluster. Alternative splicing and the use of alternative promoters results in multiple transcript variants. [provided by RefSeq, Sep 2016],

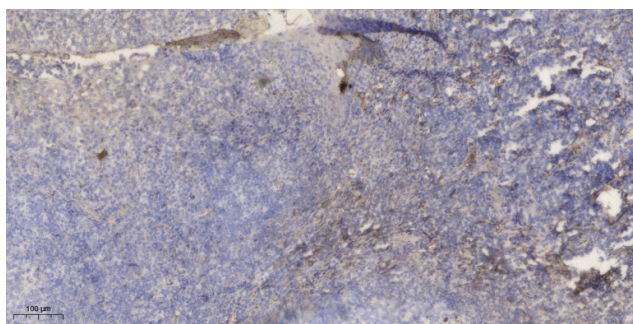
#### matters needing attention

Avoid repeated freezing and thawing!

#### Usage suggestions

This product can be used in immunological reaction related experiments. For more information, please consult technical personnel.

## Products Images



Immunohistochemical analysis of paraffin-embedded human tonsil. 1, Antibody was diluted at 1:200(4° overnight). 2, Tris-EDTA,pH9.0 was used for antigen retrieval. 3,Secondary antibody was diluted at 1:200(room temperature, 30min).

Nanjing BYabscience technology Co.,Ltd

网址: [www.njbybio.com](http://www.njbybio.com)

官方热线: 025-5229-8998

监督电话: 15950492658