



# COX6B2 Polyclona Antibody

<b>Catalog No</b>	BYab-10905
<b>Isotype</b>	IgG
<b>Reactivity</b>	Human;Rat;Mouse;
<b>Applications</b>	IHC; ELISA
<b>Gene Name</b>	COX6B2
<b>Protein Name</b>	COX6B2
<b>Immunogen</b>	Synthesized peptide derived from human COX6B2 AA range: 40-120
<b>Specificity</b>	This antibody detects endogenous levels of human COX6B2
<b>Formulation</b>	Liquid in PBS containing 50% glycerol, 0.5% BSA and 0.02% sodium azide.
<b>Source</b>	Polyclonal, Rabbit,IgG
<b>Purification</b>	The antibody was affinity-purified from mouse ascites by affinity-chromatography using specific immunogen.
<b>Dilution</b>	IHC-p 1:50-200, ELISA(peptide)1:5000-20000
<b>Concentration</b>	1 mg/ml
<b>Purity</b>	≥90%
<b>Storage Stability</b>	-20°C/1 year
<b>Synonyms</b>	Cytochrome c oxidase subunit 6B2 (Cancer/testis antigen 59;CT59;Cytochrome c oxidase subunit VIb isoform 2;COX VIb-2;Cytochrome c oxidase subunit VIb, testis-specific isoform)
<b>Observed Band</b>	
<b>Cell Pathway</b>	Mitochondrion inner membrane ; Peripheral membrane protein ; Intermembrane side .
<b>Tissue Specificity</b>	Testis specific. Weak expression in thymus and heart. Expressed in cancer cell lines.
<b>Function</b>	function:Connects the two COX monomers into the physiological dimeric form.,similarity:Belongs to the cytochrome c oxidase subunit 6B family.,tissue specificity:Testis specific. Weak expression in thymus and heart. Expressed in cancer cell lines.,
<b>Background</b>	function:Connects the two COX monomers into the physiological dimeric form.,similarity:Belongs to the cytochrome c oxidase subunit 6B family.,tissue specificity:Testis specific. Weak expression in thymus and heart. Expressed in cancer cell lines.,

**Nanjing BYabscience technology Co.,Ltd**



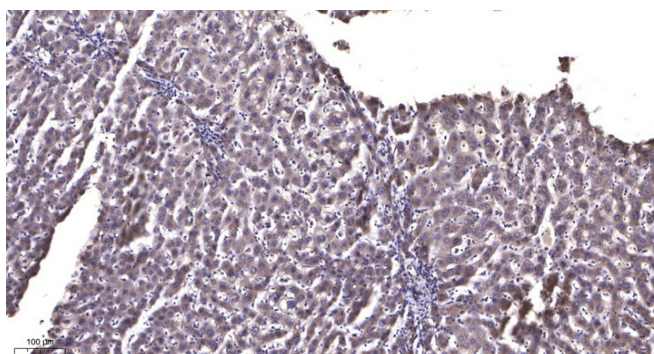
**matters needing attention**

Avoid repeated freezing and thawing!

**Usage suggestions**

This product can be used in immunological reaction related experiments. For more information, please consult technical personnel.

## Products Images



Immunohistochemical analysis of paraffin-embedded human liver cancer. 1, Antibody was diluted at 1:200(4° overnight). 2, Tris-EDTA,pH9.0 was used for antigen retrieval. 3,Secondary antibody was diluted at 1:200(room temperature, 45min).