



PDE6G Polyclona Antibody

Catalog No	BYab-10917
Isotype	IgG
Reactivity	Human; Mouse
Applications	IHC; ELISA
Gene Name	PDE6G PDEG
Protein Name	PDE6G
Immunogen	Synthesized peptide derived from human PDE6G AA range: 10-90
Specificity	This antibody detects endogenous levels of human PDE6G
Formulation	Liquid in PBS containing 50% glycerol, 0.5% BSA and 0.02% sodium azide.
Source	Polyclonal, Rabbit,IgG
Purification	The antibody was affinity-purified from mouse ascites by affinity-chromatography using specific immunogen.
Dilution	IHC-p 1:50-200, ELISA(peptide)1:5000-20000
Concentration	1 mg/ml
Purity	≥90%
Storage Stability	-20°C/1 year
Synonyms	Retinal rod rhodopsin-sensitive cGMP 3',5'-cyclic phosphodiesterase subunit gamma (GMP-PDE gamma;EC 3.1.4.35)
Observed Band	
Cell Pathway	plasma membrane,photoreceptor disc membrane,
Tissue Specificity	Human retina,Retina,
Function	catalytic activity:Guanosine 3',5'-cyclic phosphate + H(2)O = guanosine 5'-phosphate.,function:Participates in processes of transmission and amplification of the visual signal. cGMP-PDEs are the effector molecules in G-protein-mediated phototransduction in vertebrate rods and cones.,online information:Retina International's Scientific Newsletter,similarity:Belongs to the rod/cone cGMP-PDE gamma subunit family.,subunit:Oligomer composed of two catalytic chains (alpha and beta), an inhibitory chain (gamma) and the delta chain.,
Background	This gene encodes the gamma subunit of cyclic GMP-phosphodiesterase, which is composed of alpha- and beta- catalytic subunits and two identical, inhibitory gamma subunits. This gene is expressed in rod photoreceptors and functions in

Nanjing BYabscience technology Co.,Ltd



the phototransduction signaling cascade. It is also expressed in a variety of other tissues, and has been shown to regulate the c-Src protein kinase and G-protein-coupled receptor kinase 2. Alternative splicing results in multiple transcript variants. [provided by RefSeq, Feb 2009],

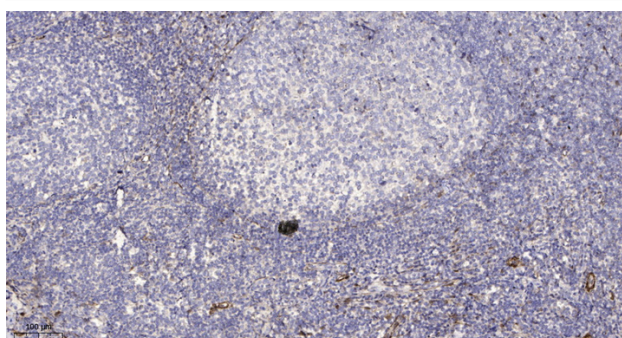
matters needing attention

Avoid repeated freezing and thawing!

Usage suggestions

This product can be used in immunological reaction related experiments. For more information, please consult technical personnel.

Products Images



Immunohistochemical analysis of paraffin-embedded human tonsil. 1, Antibody was diluted at 1:200(4° overnight). 2, Tris-EDTA,pH9.0 was used for antigen retrieval. 3,Secondary antibody was diluted at 1:200(room temperature, 30min).

Nanjing BYabscience technology Co.,Ltd

网址: www.njbybio.com

官方热线: 025-5229-8998

监督电话: 15950492658