



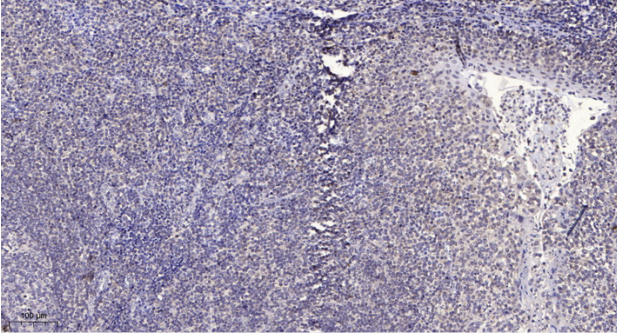
# CK010 rabbit pAb

Catalog No	BYab-10943
Isotype	IgG
Reactivity	Human; Mouse
Applications	IHC;IF
Gene Name	C11orf10 HSPC005
Protein Name	CK010
Immunogen	Synthesized peptide derived from human CK010 AA range: 15-65
Specificity	This antibody detects endogenous levels of CK010 at Human/Mouse
Formulation	Liquid in PBS containing 50% glycerol, 0.5% BSA and 0.02% sodium azide.
Source	Polyclonal, Rabbit,IgG
Purification	The antibody was affinity-purified from rabbit serum by affinity-chromatography using specific immunogen.
Dilution	IHC-p 1: 50-200. IF 1:50-200
Concentration	1 mg/ml
Purity	≥90%
Storage Stability	-20°C/1 year
Synonyms	
Observed Band	
Cell Pathway	Membrane ; Multi-pass membrane protein . Endoplasmic reticulum . Cytoplasm .
Tissue Specificity	Ubiquitously expressed.
Function	similarity:Belongs to the UPF0197 family.,
Background	
matters needing attention	Avoid repeated freezing and thawing!
Usage suggestions	This product can be used in immunological reaction related experiments. For more information, please consult technical personnel.

Nanjing BYabscience technology Co.,Ltd



## Products Images



Immunohistochemical analysis of paraffin-embedded human tonsil. 1, Antibody was diluted at 1:200(4° overnight). 2, Tris-EDTA,pH9.0 was used for antigen retrieval. 3,Secondary antibody was diluted at 1:200(room temperature, 30min).