



# SMPX rabbit pAb

<b>Catalog No</b>	BYab-10970
<b>Isotype</b>	IgG
<b>Reactivity</b>	Human; Mouse;Rat
<b>Applications</b>	IHC;IF
<b>Gene Name</b>	SMPX SRMX
<b>Protein Name</b>	SMPX
<b>Immunogen</b>	Synthesized peptide derived from human SMPX AA range: 21-71
<b>Specificity</b>	This antibody detects endogenous levels of SMPX at Human/Mouse/Rat
<b>Formulation</b>	Liquid in PBS containing 50% glycerol, 0.5% BSA and 0.02% sodium azide.
<b>Source</b>	Polyclonal, Rabbit,IgG
<b>Purification</b>	The antibody was affinity-purified from rabbit serum by affinity-chromatography using specific immunogen.
<b>Dilution</b>	IHC-p 1: 50-200. IF 1:50-200
<b>Concentration</b>	1 mg/ml
<b>Purity</b>	≥90%
<b>Storage Stability</b>	-20°C/1 year
<b>Synonyms</b>	
<b>Observed Band</b>	
<b>Cell Pathway</b>	nucleus,muscle tendon junction,integral component of membrane,M band,costamere,
<b>Tissue Specificity</b>	Preferentially and abundantly expressed in heart and skeletal muscle.
<b>Function</b>	caution:It is uncertain whether Met-1 or Met-3 is the initiator.,function:Plays a role in the regulatory network through which muscle cells coordinate their structural and functional states during growth, adaptation, and repair.,similarity:Belongs to the SMPX family.,tissue specificity:Preferentially and abundantly expressed in heart and skeletal muscle.,
<b>Background</b>	This gene encodes a small protein that has no known functional domains. Mutations in this gene are a cause of X-linked deafness-4, and the encoded protein may play a role in the maintenance of inner ear cells subjected to mechanical stress. Alternatively spliced transcript variants have been observed for this gene. [provided by RefSeq, Dec 2011],

**Nanjing BYabscience technology Co.,Ltd**



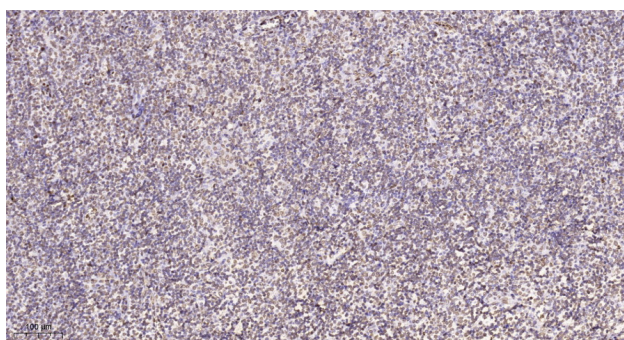
**matters needing attention**

Avoid repeated freezing and thawing!

**Usage suggestions**

This product can be used in immunological reaction related experiments. For more information, please consult technical personnel.

## Products Images



Immunohistochemical analysis of paraffin-embedded human tonsil. 1, Tris-EDTA,pH9.0 was used for antigen retrieval. 2 Antibody was diluted at 1:200(4° overnight.3,Secondary antibody was diluted at 1:200(room temperature, 45min).